

# Factor VII antibody [RFF-VII/1]

**Cat. No. GTX41198**

<b>Host</b>	Mouse
<b>Clonality</b>	Monoclonal
<b>Isotype</b>	IgG1
<b>Applications</b>	WB, ELISA, RIA
<b>Reactivity</b>	Human

**Package**  
500 µg

## Applications

### Application Note

\*Optimal dilutions/concentrations should be determined by the researcher.

Suggested dilution	Recommended dilution
WB	Assay dependent
ELISA	1/20-1/200
RIA	Assay dependent

Not tested in other applications.

**Calculated MW** 52 kDa. ( [Note](#) )

**Product Note** This antibody recognizes Factor VII. It may be used to detect Factor VII in immunoassays in combination with clone RFF-VII/2 (GTX41194, GTX41196) as a capture reagent.

## Properties

<b>Form</b>	Liquid
<b>Buffer</b>	PBS
<b>Preservative</b>	0.09% Sodium azide
<b>Storage</b>	Store as concentrated solution. Centrifuge briefly prior to opening vial. For short-term storage (1-2 weeks), store at 4°C. For long-term storage, aliquot and store at -20°C or below. Avoid multiple freeze-thaw cycles.
<b>Concentration</b>	1.0 mg/ml (Please refer to the vial label for the specific concentration.)
<b>Immunogen</b>	Purified human factor VII.
<b>Purification</b>	Protein G purified From tissue culture supernatant
<b>Conjugation</b>	Unconjugated

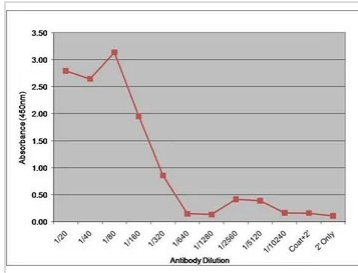


For full product information, images and publications, please visit our [website](#).

For laboratory research use only. Not for any clinical, therapeutic, or diagnostic use in humans or animals. Not for animal or human consumption.

**Note**

Purchasers shall not, and agree not to enable third parties to, analyze, copy, reverse engineer or otherwise attempt to determine the structure or sequence of the product.

**DATA IMAGES**

**GTX41198 ELISA Image**

ELISA analysis of human serum using GTX41198 Factor VII antibody [RFF-VII/1].



For full product information, images and publications, please visit our [website](https://www.genetex.com).