

## F4/80 antibody [Cl:A3-1] (Low endotoxin, azide free)

**Cat. No. GTX41205**

<b>Host</b>	Rat
<b>Clonality</b>	Monoclonal
<b>Isotype</b>	IgG2b
<b>Application</b>	WB, ICC/IF, IHC-P, IHC-Fr, FACS, IP, IHC (Resin sections), IHC, Neutralizing/Inhibition, RIA
<b>Reactivity</b>	Human, Mouse

Reference ( 42 )  
Package  
500 µg

### APPLICATION

#### Application Note

\*Optimal dilutions/concentrations should be determined by the researcher.

Suggested dilution	Recommended dilution
WB	Assay dependent
ICC/IF	Assay dependent
IHC-P	Assay dependent
IHC-Fr	Assay dependent
FACS	1/100-1/200
IP	Assay dependent
IHC (Resin sections)	Assay dependent
IHC	Assay dependent
Neutralizing/Inhibition	Assay dependent
RIA	Assay dependent

**Note : Use 10µl of the suggested working dilution to label 10<sup>6</sup> cells in 100µl.**

**Anti-F4/80 mAb specifically inhibits IFN-g production in HKL-stimulated SCID WSC cultures (Warschkau & Kiderlen, 1999).**

Not tested in other applications.

<b>Calculated MW</b>	102 kDa. ( <a href="#">Note</a> )
<b>Product Note</b>	This antibody recognizes murine F4/80 antigen which shares 68% overall amino acid identity with human EGF module-containing mucin-like hormone receptor 1 (EMR1).

### PROPERTIES

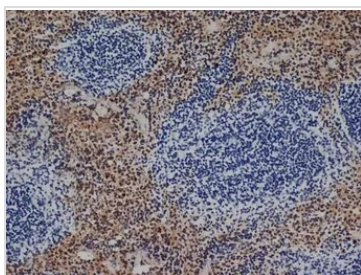
<b>Form</b>	Liquid
<b>Buffer</b>	PBS
<b>Preservative</b>	No preservative



For full product information, images and publications, please visit our [website](#).

<b>Storage</b>	Store as concentrated solution. Centrifuge briefly prior to opening vial. For short-term storage (1-2 weeks), store at 4°C. For long-term storage, aliquot and store at -20°C or below. Avoid multiple freeze-thaw cycles.
<b>Concentration</b>	1 mg/ml (Please refer to the vial label for the specific concentration.)
<b>Immunogen</b>	Thioglycollate stimulated peritoneal macrophages from C57BL/6 mice.
<b>Purification</b>	Protein G purified From tissue culture supernatant
<b>Endotoxin</b>	< 0.01 EU/μg (determined by the LAL assay)
<b>Conjugation</b>	Unconjugated
<b>Note</b>	<p>For laboratory research use only. Not for any clinical, therapeutic, or diagnostic use in humans or animals. Not for animal or human consumption.</p> <p>Purchasers shall not, and agree not to enable third parties to, analyze, copy, reverse engineer or otherwise attempt to determine the structure or sequence of the product.</p>

## DATA IMAGES



**GTX41205 IHC-Fr Image**

IHC-Fr analysis of mouse spleen tissue using GTX41205 F4/80 antibody at 1/100



For full product information, images and publications, please visit our [website](#).