

# Estrogen Receptor beta 5 antibody [5/25]

**Cat. No. GTX41209**

<b>Host</b>	Mouse
<b>Clonality</b>	Monoclonal
<b>Isotype</b>	IgG1
<b>Applications</b>	WB, IHC-P
<b>Reactivity</b>	Human

**Package**

25 µg

## Applications

### Application Note

\*Optimal dilutions/concentrations should be determined by the researcher.

Suggested dilution	Recommended dilution
WB	Assay dependent
IHC-P	Assay dependent

Not tested in other applications.

**Calculated MW** 59 kDa. ( [Note](#) )

### Product Note

Clone 5/25 specifically recognizes human estrogen receptor beta 5 (ERB5), a splice variant of the nuclear receptor hormone ERbeta (ESR2), shown to exist in at least five isoforms (ERB1-ERB5).

## Properties

<b>Form</b>	Liquid
<b>Buffer</b>	PBS
<b>Preservative</b>	0.1% Sodium azide
<b>Storage</b>	Store as concentrated solution. Centrifuge briefly prior to opening vial. For short-term storage (1-2 weeks), store at 4°C. For long-term storage, aliquot and store at -20°C or below. Avoid multiple freeze-thaw cycles.
<b>Concentration</b>	1.0 mg/ml (Please refer to the vial label for the specific concentration.)
<b>Immunogen</b>	Tuberculin conjugated synthetic peptide LLSHVRHARYAP derived from the C-terminus of human ERB5.
<b>Purification</b>	Protein G purified From tissue culture supernatant
<b>Conjugation</b>	Unconjugated



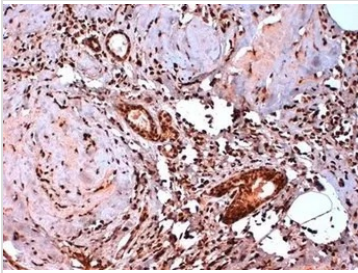
For full product information, images and publications, please visit our [website](#).

For laboratory research use only. Not for any clinical, therapeutic, or diagnostic use in humans or animals. Not for animal or human consumption.

**Note**

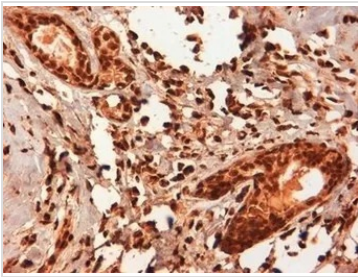
Purchasers shall not, and agree not to enable third parties to, analyze, copy, reverse engineer or otherwise attempt to determine the structure or sequence of the product.

## DATA IMAGES



**GTX41209 IHC-P Image**

IHC-P analysis of human breast cancer tissue using GTX41209 Estrogen Receptor beta 5 antibody [5/25].



**GTX41209 IHC-P Image**

IHC-P analysis of human breast cancer tissue using GTX41209 Estrogen Receptor beta 5 antibody. Antigen retrieval using citrate buffer at pH6.2.



For full product information, images and publications, please visit our [website](#).