

Estrogen Receptor beta 5 antibody [5/25]

Cat. No. GTX41212

Host	Mouse
Clonality	Monoclonal
Isotype	IgG1
Applications	WB, IHC-P
Reactivity	Human

Package
100 µg

Applications

Application Note

*Optimal dilutions/concentrations should be determined by the researcher.

Suggested dilution	Recommended dilution
WB	Assay dependent
IHC-P	Assay dependent

Not tested in other applications.

Calculated MW 59 kDa. ([Note](#))

Product Note

Clone 5/25 specifically recognizes human estrogen receptor beta 5 (ERB5), a splice variant of the nuclear receptor hormone ER beta (ESR2), shown to exist in at least five isoforms (ERB1-ERB5).

Properties

Form	Liquid
Buffer	PBS
Preservative	0.1% Sodium azide
Storage	Store as concentrated solution. Centrifuge briefly prior to opening vial. For short-term storage (1-2 weeks), store at 4°C. For long-term storage, aliquot and store at -20°C or below. Avoid multiple freeze-thaw cycles.
Concentration	1.0 mg/ml (Please refer to the vial label for the specific concentration.)
Immunogen	Tuberculin conjugated synthetic peptide LLSHVRHARYAP derived from the C-terminus of human ERB5.
Purification	Protein G purified From tissue culture supernatant
Conjugation	Unconjugated



For full product information, images and publications, please visit our [website](#).

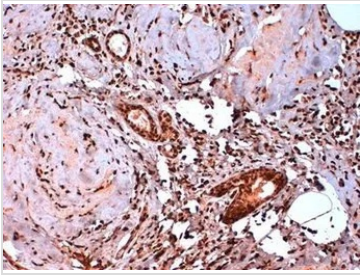
Date 2026 / 01 / 16 Page 1 of 2

For laboratory research use only. Not for any clinical, therapeutic, or diagnostic use in humans or animals. Not for animal or human consumption.

Note

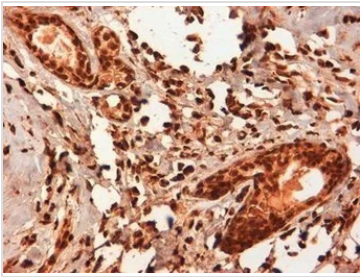
Purchasers shall not, and agree not to enable third parties to, analyze, copy, reverse engineer or otherwise attempt to determine the structure or sequence of the product.

DATA IMAGES



GTX41212 IHC-P Image

IHC-P analysis of human breast cancer tissue using GTX41212 Estrogen Receptor beta 5 antibody [5/25].



GTX41212 IHC-P Image

IHC-P analysis of human breast cancer tissue using GTX41212 Estrogen Receptor beta 5 antibody [5/25].



For full product information, images and publications, please visit our [website](#).