

Estrogen Receptor beta 2 antibody [57/3]

Cat. No. GTX41213

Host	Mouse
Clonality	Monoclonal
Isotype	IgG1
Applications	IHC-P
Reactivity	Human

Package
50 µg

Applications

Application Note

*Optimal dilutions/concentrations should be determined by the researcher.

Suggested dilution	Recommended dilution
IHC-P	1/50-1/500

Note : This product requires antigen retrieval using heat treatment prior to staining of paraffin sections. Sodium citrate buffer pH 6.0 is recommended for this purpose. Glycine/ EDTA preparations have also been used with success in some tissues.

Not tested in other applications.

Product Note

This antibody recognizes the estrogen receptor beta 2 isoform. No cross-reactivity is seen with estrogen receptor beta 1 isoform.

Properties

Form	Liquid
Buffer	PBS
Preservative	0.09% Sodium azide
Storage	Store as concentrated solution. Centrifuge briefly prior to opening vial. For short-term storage (1-2 weeks), store at 4°C. For long-term storage, aliquot and store at -20°C or below. Avoid multiple freeze-thaw cycles.
Concentration	1.0 mg/ml (Please refer to the vial label for the specific concentration.)
Immunogen	Synthetic peptide derived from the C terminus of the human estrogen receptor beta 2 isoform, CGMKMETLLPEATMEQ.
Purification	Purified IgG
Conjugation	Unconjugated

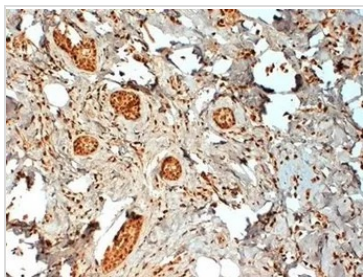
Note

For laboratory research use only. Not for any clinical, therapeutic, or diagnostic use in humans or animals. Not for animal or human consumption.

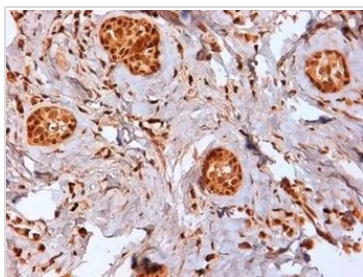
Purchasers shall not, and agree not to enable third parties to, analyze, copy, reverse engineer or otherwise attempt to determine the structure or sequence of the product.



For full product information, images and publications, please visit our [website](#).

DATA IMAGES

GTX41213 IHC-P Image

IHC-P analysis of human breast cancer tissue using GTX41213 Estrogen Receptor beta 2 antibody. Antigen retrieval using citrate buffer at pH6.2.


GTX41213 IHC-P Image

IHC-P analysis of human breast cancer tissue using GTX41213 Estrogen Receptor beta 2 antibody. Antigen retrieval using citrate buffer at pH6.2.



For full product information, images and publications, please visit our [website](#).