

Epac1 antibody

Cat. No. GTX41235

Host	Rabbit
Clonality	Polyclonal
Isotype	IgG
Application	WB, ICC/IF, ELISA, IHC
Reactivity	Human, Mouse, Rat, Horse

Reference (2)
Package
50 µg

APPLICATION

Application Note

*Optimal dilutions/concentrations should be determined by the researcher.

Suggested dilution	Recommended dilution
WB	1:500
ICC/IF	1:200
ELISA	1:10000
IHC	1:200

Not tested in other applications.

Calculated MW	104 kDa. (Note)
Product Note	This antibody does not cross react with Epac2.

PROPERTIES

Form	Liquid
Buffer	Tris/Glycine, 0.5% BSA, 30% Glycerol
Preservative	0.02% Sodium azide
Storage	Store as concentrated solution. Centrifuge briefly prior to opening vial. For short-term storage (1-2 weeks), store at 4°C. For long-term storage, aliquot and store at -20°C or below. Avoid multiple freeze-thaw cycles.
Concentration	0.59 mg/ml (Please refer to the vial label for the specific concentration.)
Immunogen	Synthetic peptide corresponding to amino acid region 9-26 of Epac1, peptide was covalently modified. Synthetic peptide: PRSCSYQLLEHQRPSCI
Purification	Purified by affinity chromatography
Conjugation	Unconjugated



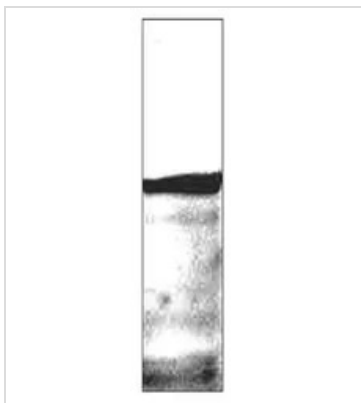
For full product information, images and publications, please visit our [website](#).

For laboratory research use only. Not for any clinical, therapeutic, or diagnostic use in humans or animals. Not for animal or human consumption.

Note

Purchasers shall not, and agree not to enable third parties to, analyze, copy, reverse engineer or otherwise attempt to determine the structure or sequence of the product.

DATA IMAGES



GTx41235 WB Image

WB analysis of EPAC1 recombinant protein using GTx41235 Epac1 antibody.

Dilution : 1:500



For full product information, images and publications, please visit our [website](#).