

DLL1 antibody [HMD1-5]

Cat. No. GTX41441

Host	Armenian Hamster
Clonality	Monoclonal
Isotype	IgG
Applications	IHC-Fr, FCM, Neutralizing /Inhibition
Reactivity	Mouse, Rat

References (1)

Package

100 µg

Applications

Application Note

*Optimal dilutions/concentrations should be determined by the researcher.

Suggested dilution	Recommended dilution
IHC-Fr	Assay dependent
FCM	Assay dependent
Neutralizing /Inhibition	Assay dependent

Note : Hamster anti Mouse Delta-Like Protein 1 antibody, clone HMD1-5 blocks binding of Notch2 to Dll1 (Moriyama et al. 2008)

Not tested in other applications.

Properties

Form	Liquid
Buffer	PBS
Preservative	0.09% Sodium azide
Storage	Store as concentrated solution. Centrifuge briefly prior to opening vial. For short-term storage (1-2 weeks), store at 4°C. For long-term storage, aliquot and store at -20°C or below. Avoid multiple freeze-thaw cycles.
Concentration	1.0 mg/ml (Please refer to the vial label for the specific concentration.)
Immunogen	DLL1-expressing CHO cells.
Purification	Protein G purified
Conjugation	Unconjugated

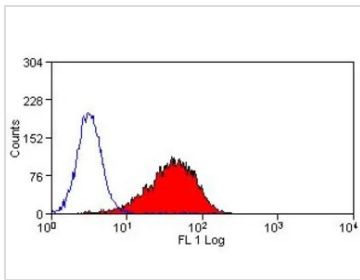
Note For laboratory research use only. Not for any clinical, therapeutic, or diagnostic use in humans or animals. Not for animal or human consumption.

Purchasers shall not, and agree not to enable third parties to, analyze, copy, reverse engineer or otherwise attempt to determine the structure or sequence of the product.



For full product information, images and publications, please visit our [website](#).

DATA IMAGES

**GTX41441 FCM Image**

FACS analysis of mouse Delta like protein 1 transfected cells using GTX41441 DLL1 antibody [HMD1-5].



For full product information, images and publications, please visit our [website](#).