

Dectin-1 antibody [GE2] (Low endotoxin, azide free)

Cat. No. GTX41459

Host	Mouse
Clonality	Monoclonal
Isotype	IgG1
Applications	FCM, Functional Assay
Reactivity	Human

References (1)

Package

100 µg

Applications

Application Note

*Optimal dilutions/concentrations should be determined by the researcher.

Suggested dilution	Recommended dilution
FCM	Neat-1/25
Functional Assay	Assay dependent

Note : Use 10µl of the suggested working dilution to label 10⁶ cells in 100µl.

Not tested in other applications.

Product Note This antibody recognizes both of these isoforms

Properties

Form	Liquid
Buffer	PBS
Preservative	No preservatives
Storage	Store as concentrated solution. Centrifuge briefly prior to opening vial. For short-term storage (1-2 weeks), store at 4°C. For long-term storage, aliquot and store at -20°C or below. Avoid multiple freeze-thaw cycles.
Concentration	1.0 mg/ml (Please refer to the vial label for the specific concentration.)
Immunogen	NIH3T3 cells expressing full length Dectin-1
Purification	Protein A purified From tissue culture supernatant
Endotoxin	< 0.01 EU/µg (determined by the LAL assay)
Conjugation	Unconjugated

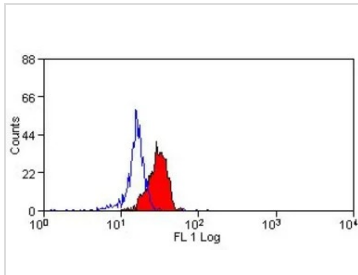
For full product information, images and publications, please visit our [website](#).

For laboratory research use only. Not for any clinical, therapeutic, or diagnostic use in humans or animals. Not for animal or human consumption.

Note

Purchasers shall not, and agree not to enable third parties to, analyze, copy, reverse engineer or otherwise attempt to determine the structure or sequence of the product.

DATA IMAGES

**GTX41459 FCM Image**

FACS analysis of human peripheral blood monocytes using GTX41459 Dectin-1 antibody [GE2] (Low endotoxin, azide free).



For full product information, images and publications, please visit our [website](#).