

Dectin-1 antibody [2A11]

Cat No. GTX41466

Host	Rat
Clonality	Monoclonal
Isotype	IgG2b
Application	IHC-Fr, FACS, IP
Reactivity	Mouse

Reference (1)
 Package
 25 µg

APPLICATION

Application Note

*Optimal dilutions/concentrations should be determined by the researcher.

Suggested dilution	Dilution
IHC-Fr	Assay dependent
FACS	1/10-1/50
IP	Assay dependent

Note : Use 10µl of the suggested working dilution to label 10⁶ cells in 100µl.

Not tested in other applications.

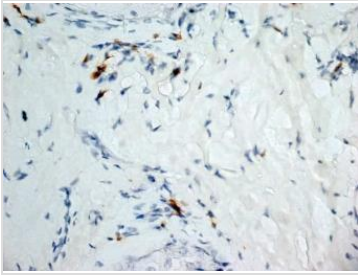
PROPERTIES

Form	Liquid
Buffer	PBS, 0.09% Sodium Azide
Storage	Store as concentrated solution. Centrifuge briefly prior to opening vial. Store at 4°C. DO NOT FREEZE.
Concentration	1.0 mg/ml (Please refer to the vial label for the specific concentration.)
Immunogen	Dectin-1 transfected NIH3T3 cells and recombinant soluble Dectin-1.
Purification	Protein G purified From tissue culture supernatant
Conjugation	Unconjugated
Note	For laboratory use only. Not for any clinical, therapeutic, or diagnostic use in humans or animals. Not for animal or human consumption.

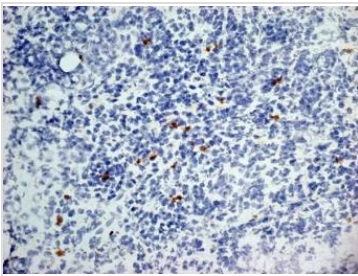


For full product information, images and publications, please visit our [website](#).

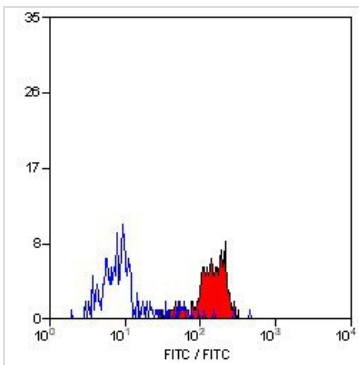
DATA IMAGES

**GTX41466 IHC-Fr Image**

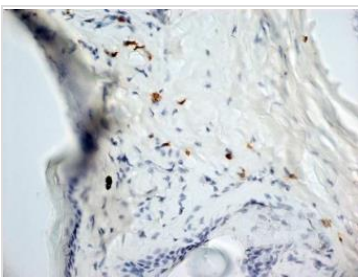
IHC-Fr analysis of mouse lymph node tissue using GTX41466 Dectin-1 antibody [2A11].

**GTX41466 IHC-Fr Image**

IHC-Fr analysis of mouse lymph node tissue using GTX41466 Dectin-1 antibody [2A11].

**GTX41466 FACS Image**

FACS analysis of mouse peripheral blood monocytes using GTX41466 Dectin-1 antibody [2A11].

**GTX41466 IHC-Fr Image**

IHC-Fr analysis of mouse skin tissue using GTX41466 Dectin-1 antibody [2A11].



For full product information, images and publications, please visit our [website](#).