

## Dectin-1 antibody [2A11]

Cat. No. GTX41473

Host	Rat
Clonality	Monoclonal
Isotype	IgG2b
Applications	IHC-Fr, FCM, IP
Reactivity	Mouse

References ( 9 )

Package

250 µg

## Applications

## Application Note

\*Optimal dilutions/concentrations should be determined by the researcher.

Suggested dilution	Recommended dilution
IHC-Fr	Assay dependent
FCM	1/10-1/50
IP	Assay dependent

**Note : Use 10µl of the suggested working dilution to label 10<sup>6</sup> cells in 100µl.**

Not tested in other applications.

## Properties

Form	Liquid
Buffer	PBS
Preservative	0.09% Sodium azide
Storage	Store as concentrated solution. Centrifuge briefly prior to opening vial. Store at 4°C. DO NOT FREEZE.
Concentration	1.0 mg/ml (Please refer to the vial label for the specific concentration.)
Immunogen	Dectin-1 transfected NIH3T3 cells and recombinant soluble Dectin-1.
Purification	Protein G purified From tissue culture supernatant
Conjugation	Unconjugated

## Note

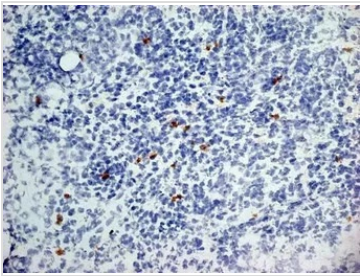
For laboratory research use only. Not for any clinical, therapeutic, or diagnostic use in humans or animals. Not for animal or human consumption.

Purchasers shall not, and agree not to enable third parties to, analyze, copy, reverse engineer or otherwise attempt to determine the structure or sequence of the product.



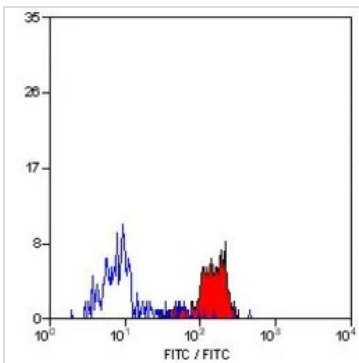
For full product information, images and publications, please visit our [website](#).

## DATA IMAGES



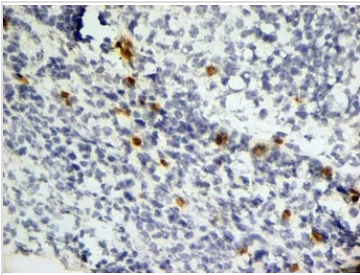
### GTX41473 IHC-Fr Image

IHC-Fr analysis of mouse lymph node tissue using GTX41473 Dectin-1 antibody [2A11].



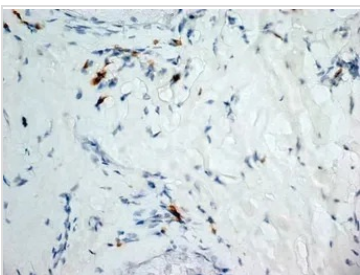
### GTX41473 FCM Image

FACS analysis of mouse peripheral blood monocytes using GTX41473 Dectin-1 antibody [2A11].



### GTX41473 IHC-Fr Image

IHC-Fr analysis of mouse lymph node tissue using GTX41473 Dectin-1 antibody [2A11].



### GTX41473 IHC-Fr Image

IHC-Fr analysis of mouse lymph node tissue using GTX41473 Dectin-1 antibody [2A11].



For full product information, images and publications, please visit our [website](#).