

## p22phox antibody [CS9]

Cat. No. GTX41562

Host	Mouse
Clonality	Monoclonal
Isotype	IgG1
Applications	WB, IHC-Fr, FCM, IP, ELISA
Reactivity	Human

Package  
100 µg

## Applications

## Application Note

\*Optimal dilutions/concentrations should be determined by the researcher.

Suggested dilution	Recommended dilution
WB	Assay dependent
IHC-Fr	Assay dependent
FCM	1/10-1/100
IP	Assay dependent
ELISA	Assay dependent

**Note :** Membrane permeabilisation is required for this application. Use 10µl of the suggested working dilution to label 10<sup>6</sup> cells in 100µl.

Not tested in other applications.

**Calculated MW** 21 kDa. ( [Note](#) )

Properties	
Form	Liquid
Buffer	PBS
Preservative	0.09% Sodium azide
Storage	Store as concentrated solution. Centrifuge briefly prior to opening vial. For short-term storage (1-2 weeks), store at 4°C. For long-term storage, aliquot and store at -20°C or below. Avoid multiple freeze-thaw cycles.
Concentration	1.0 mg/ml (Please refer to the vial label for the specific concentration.)
Immunogen	Cytochrome B245 solubilised in octyl-beta-glucopyranoside.
Purification	Purified by affinity chromatography From tissue culture supernatant
Conjugation	Unconjugated

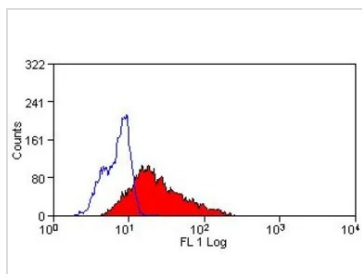


For full product information, images and publications, please visit our [website](#).

For laboratory research use only. Not for any clinical, therapeutic, or diagnostic use in humans or animals. Not for animal or human consumption.

**Note**

Purchasers shall not, and agree not to enable third parties to, analyze, copy, reverse engineer or otherwise attempt to determine the structure or sequence of the product.

**DATA IMAGES**

**GTX41562 FCM Image**

FACS analysis of human peripheral blood granulocytes using GTX41562 p22phox antibody [CS9].



For full product information, images and publications, please visit our [website](#).