

Chromogranin A antibody [LK2H10]

Cat. No. GTX41688

Host	Mouse
Clonality	Monoclonal
Isotype	IgG1
Applications	WB, IHC-P, IHC-Fr
Reactivity	Human, Pig, Monkey

References (2)

Package

200 µg

Applications

Application Note

*Optimal dilutions/concentrations should be determined by the researcher.

Suggested dilution	Recommended dilution
WB	Assay dependent
IHC-P	1/100-1/500
IHC-Fr	Assay dependent

Note : This product requires antigen retrieval using heat treatment prior to staining of paraffin sections. Sodium citrate buffer pH 6.0 is recommended for this purpose.

Not tested in other applications.

Calculated MW	51 kDa. (Note)
Product Note	This antibody recognizes chromogranin A (CgA).

Properties

Form	Liquid
Buffer	PBS
Preservative	0.09% Sodium azide
Storage	Store as concentrated solution. Centrifuge briefly prior to opening vial. For short-term storage (1-2 weeks), store at 4°C. For long-term storage, aliquot and store at -20°C or below. Avoid multiple freeze-thaw cycles.
Concentration	1.0 mg/ml (Please refer to the vial label for the specific concentration.)
Immunogen	Human pheochromocytoma tissue.
Purification	Protein A purified From tissue culture supernatant
Conjugation	Unconjugated



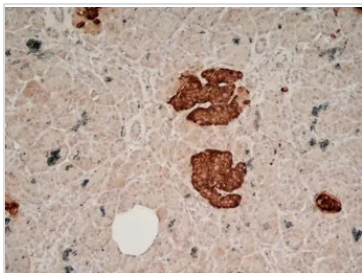
For full product information, images and publications, please visit our [website](#).

For laboratory research use only. Not for any clinical, therapeutic, or diagnostic use in humans or animals. Not for animal or human consumption.

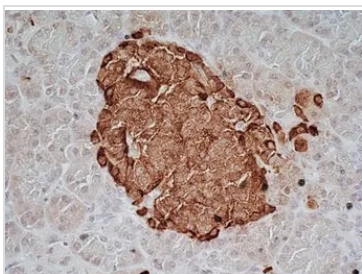
Note

Purchasers shall not, and agree not to enable third parties to, analyze, copy, reverse engineer or otherwise attempt to determine the structure or sequence of the product.

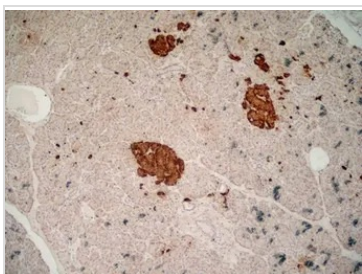
DATA IMAGES

**GTX41688 IHC-Fr Image**

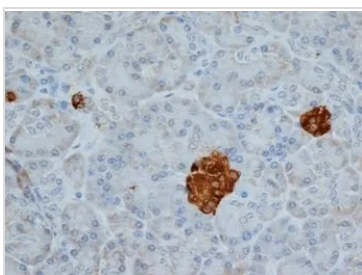
IHC-Fr analysis of human pancreas tissue using GTX41688 Chromogranin A antibody [LK2H10].

**GTX41688 IHC-Fr Image**

IHC-Fr analysis of human pancreas tissue using GTX41688 Chromogranin A antibody [LK2H10].

**GTX41688 IHC-Fr Image**

IHC-Fr analysis of human pancreas tissue using GTX41688 Chromogranin A antibody [LK2H10].

**GTX41688 IHC-P Image**

IHC-P analysis of human pancreas tissue using GTX41688 Chromogranin A antibody [LK2H10].



For full product information, images and publications, please visit our [website](#).