

NDRG1 antibody, C-term

Cat. No. GTX41727

Host	Goat
Clonality	Polyclonal
Isotype	IgG
Applications	WB, IHC-P
Reactivity	Human

Package
100 µg

Applications

Application Note

*Optimal dilutions/concentrations should be determined by the researcher.

Suggested dilution	Recommended dilution
WB	0.1-0.3µg/ml
IHC-P	2.5µg/ml

Note : Human hepatocellular carcinoma shows strong labeling of membranes and weaker staining of cytoplasm. These observations are consistent with those obtained by different antibodies.

Not tested in other applications.

Calculated MW 43 kDa. ([Note](#))

Properties

Form	Liquid
Buffer	TBS, 0.5% BSA
Preservative	0.02% Sodium azide
Storage	Store as concentrated solution. Centrifuge briefly prior to opening vial. For short-term storage (1-2 weeks), store at 4°C. For long-term storage, aliquot and store at -20°C or below. Avoid multiple freeze-thaw cycles.
Concentration	0.50 mg/ml (Please refer to the vial label for the specific concentration.)
Immunogen	Peptide with sequence GNSAGPKSMEVSC, from the C Terminus of the protein sequence according to NP_006087.2.
Purification	Purified by ammonium sulphate precipitation followed by antigen affinity chromatography
Conjugation	Unconjugated

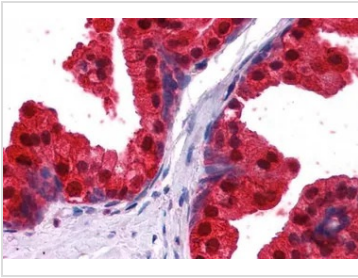
Note

For laboratory research use only. Not for any clinical, therapeutic, or diagnostic use in humans or animals. Not for animal or human consumption.

Purchasers shall not, and agree not to enable third parties to, analyze, copy, reverse engineer or otherwise attempt to determine the structure or sequence of the product.



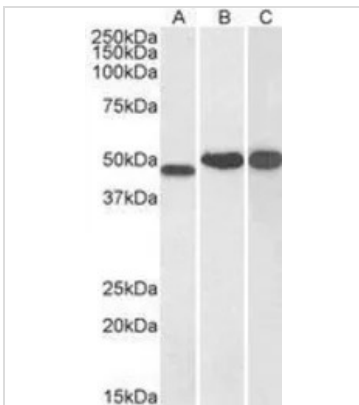
For full product information, images and publications, please visit our [website](#).

DATA IMAGES

GTX41727 IHC-P Image

IHC-P analysis of human prostate using GTX41727 NDRG1 antibody, C-term.

Antigen retrieval : citrate buffer pH 6

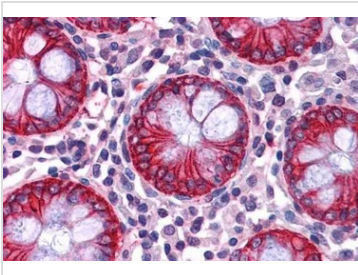
Dilution : 2.5µg/ml


GTX41727 WB Image

WB analysis of human kidney (A), cerebellum (B) and testis (C) lysate using GTX41727 NDRG1 antibody, C-term.

Dilution : 0.1µg/ml

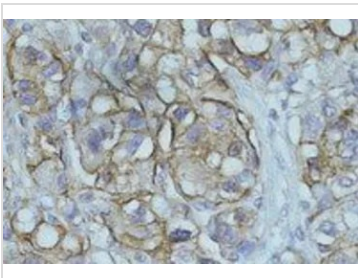
Loading : 35µg protein in RIPA buffer


GTX41727 IHC-P Image

IHC-P analysis of human colon using GTX41727 NDRG1 antibody, C-term.

Antigen retrieval : citrate buffer pH 6

Dilution : 2.5µg/ml


GTX41727 IHC-P Image

IHC-P analysis of human hepatocellular carcinoma using GTX41727 NDRG1 antibody, C-term.

Dilution : 0.5µg/ml



For full product information, images and publications, please visit our [website](http://www.genetex.com).