

CD86 antibody [24F]

Cat. No. GTX41787

Host	Mouse
Clonality	Monoclonal
Isotype	IgG1
Applications	IHC-Fr, FCM, IP
Reactivity	Rat

Package

25 µg

Applications

Application Note

*Optimal dilutions/concentrations should be determined by the researcher.

Suggested dilution	Recommended dilution
IHC-Fr	Assay dependent
FCM	Assay dependent
IP	Assay dependent

Not tested in other applications.

Properties

Form	Liquid
Buffer	PBS
Preservative	0.09% Sodium azide
Storage	Store as concentrated solution. Centrifuge briefly prior to opening vial. For short-term storage (1-2 weeks), store at 4°C. For long-term storage, aliquot and store at -20°C or below. Avoid multiple freeze-thaw cycles.
Concentration	1.0 mg/ml (Please refer to the vial label for the specific concentration.)
Immunogen	HTLV-1 transformed Lewis-S1 cells.
Purification	Protein G purified From tissue culture supernatant
Conjugation	Unconjugated

Note

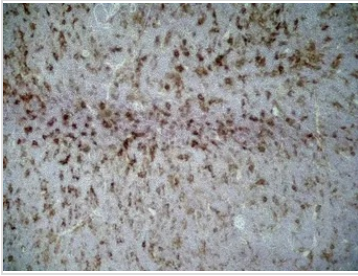
For laboratory research use only. Not for any clinical, therapeutic, or diagnostic use in humans or animals. Not for animal or human consumption.

Purchasers shall not, and agree not to enable third parties to, analyze, copy, reverse engineer or otherwise attempt to determine the structure or sequence of the product.



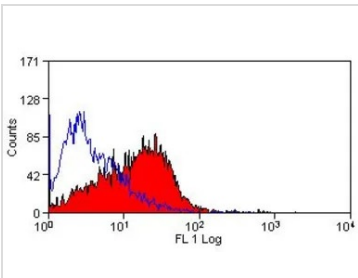
For full product information, images and publications, please visit our [website](#).

DATA IMAGES



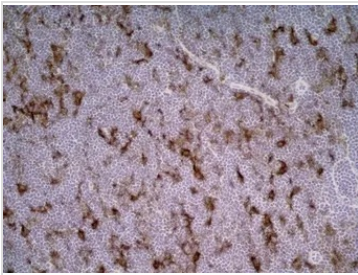
GTX41787 IHC-Fr Image

IHC-Fr analysis of rat lymph node tissue using GTX41787 CD86 antibody [24F].



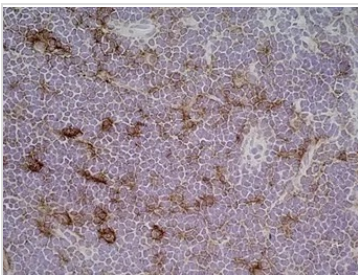
GTX41787 FCM Image

FACS analysis of rat splenocytes using GTX41787 CD86 antibody [24F].



GTX41787 IHC-Fr Image

IHC-Fr analysis of rat lymph node tissue using GTX41787 CD86 antibody [24F].



GTX41787 IHC-Fr Image

IHC-Fr analysis of rat lymph node tissue using GTX41787 CD86 antibody [24F].



For full product information, images and publications, please visit our [website](#).