

## CD8 alpha antibody [YTS105.18] (Low endotoxin, azide free)

## Cat. No. GTX41819

<b>Host</b>	Rat
<b>Clonality</b>	Monoclonal
<b>Isotype</b>	IgG2a
<b>Applications</b>	ICC/IF, IHC-Fr, FCM
<b>Reactivity</b>	Mouse

References ( 3 )

Package

500 µg

## Applications

## Application Note

\*Optimal dilutions/concentrations should be determined by the researcher.

Suggested dilution	Recommended dilution
ICC/IF	Assay dependent
IHC-Fr	Assay dependent
FCM	1/50-1/100

**Note : Use 10µl of the suggested working dilution to label 10<sup>6</sup> cells in 100µl.**

Not tested in other applications.

**Product Note** This antibody recognizes a non polymorphic epitope on the mouse CD8 alpha chain.

## Properties

<b>Form</b>	Liquid
<b>Buffer</b>	PBS
<b>Preservative</b>	No preservatives
<b>Storage</b>	Store as concentrated solution. Centrifuge briefly prior to opening vial. For short-term storage (1-2 weeks), store at 4°C. For long-term storage, aliquot and store at -20°C or below. Avoid multiple freeze-thaw cycles.
<b>Concentration</b>	1 mg/ml (Please refer to the vial label for the specific concentration.)
<b>Immunogen</b>	Mouse spleen cells.
<b>Purification</b>	Protein G purified From tissue culture supernatant
<b>Endotoxin</b>	< 0.01 EU/µg (determined by the LAL assay)
<b>Conjugation</b>	Unconjugated



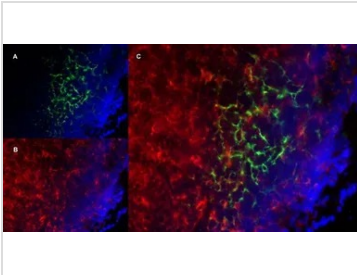
For full product information, images and publications, please visit our [website](#).

For laboratory research use only. Not for any clinical, therapeutic, or diagnostic use in humans or animals. Not for animal or human consumption.

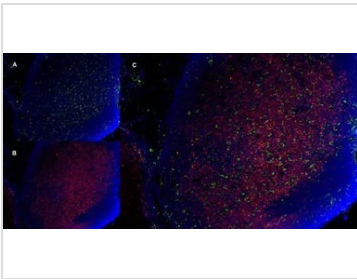
**Note**

Purchasers shall not, and agree not to enable third parties to, analyze, copy, reverse engineer or otherwise attempt to determine the structure or sequence of the product.

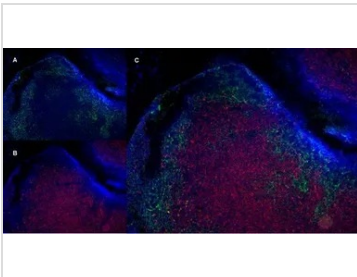
## DATA IMAGES

**GTX41819 IHC-Fr Image**

IHC-Fr analysis of a mouse lymph node with Rat anti mouse CD19, clone 6D5 (GTX75012), green in A and Rat anti Mouse CD8 (GTX41819), red in B. Merged image in C with nuclei counterstained blue using DAPI. High power

**GTX41819 IHC-Fr Image**

IHC-Fr analysis of mouse lymph node with Rat anti Mouse CD11b, clone 5C6, green in A and Rat anti Mouse CD8, clone YTS105.18 (GTX41819), red in B. C is the merged image with nuclei counterstained blue using DAPI. Low power

**GTX41819 IHC-Fr Image**

IHC-Fr analysis of a mouse lymph node with Rat anti mouse CD19, clone 6D5 (GTX75012), green in A and Rat anti Mouse CD8 (GTX41819), red in B. Merged image in C with nuclei counterstained blue using DAPI. Low power

**GTX41819 IHC-Fr Image**

IHC-Fr analysis of mouse lymph node tissue using GTX41819 CD8 antibody [YTS105.18] (Low endotoxin, azide free).



For full product information, images and publications, please visit our [website](#).