

CD8 alpha antibody [OX-8]

Cat. No. GTX41830

Host	Mouse
Clonality	Monoclonal
Isotype	IgG1
Application	WB, ICC/IF, IHC-P, IHC-Fr, FACS, IP, IHC
Reactivity	Rat

Reference (2)

Package

250 µg

APPLICATION

Application Note

*Optimal dilutions/concentrations should be determined by the researcher.

Suggested dilution	Recommended dilution
WB	Assay dependent
ICC/IF	Assay dependent
IHC-P	Assay dependent
IHC-Fr	Assay dependent
FACS	1/50-1/100
IP	Assay dependent
IHC	Assay dependent

Note : Use 10µl of the suggested working dilution to label 10⁶ cells in 100µl.

Not tested in other applications.

Calculated MW 26 kDa. ([Note](#))

PROPERTIES

Form	Liquid
Buffer	PBS
Preservative	0.09% Sodium azide
Storage	Store as concentrated solution. Centrifuge briefly prior to opening vial. For short-term storage (1-2 weeks), store at 4°C. For long-term storage, aliquot and store at -20°C or below. Avoid multiple freeze-thaw cycles.
Concentration	1.0 mg/ml (Please refer to the vial label for the specific concentration.)
Immunogen	Rat thymocyte membrane glycoproteins.
Purification	Protein A purified From tissue culture supernatant



For full product information, images and publications, please visit our [website](#).

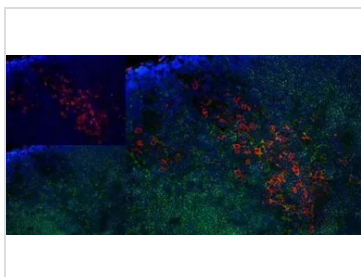
Conjugation

Unconjugated

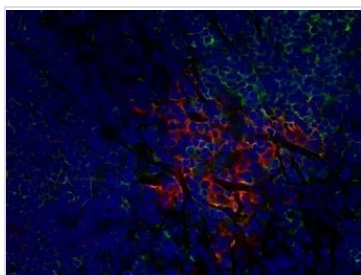
Note

For laboratory research use only. Not for any clinical, therapeutic, or diagnostic use in humans or animals. Not for animal or human consumption.

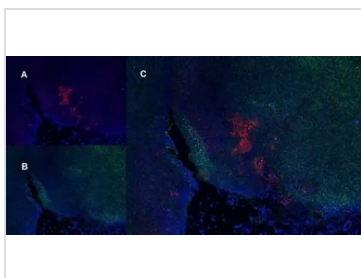
Purchasers shall not, and agree not to enable third parties to, analyze, copy, reverse engineer or otherwise attempt to determine the structure or sequence of the product.

DATA IMAGES

GTx41830 IHC-Fr Image

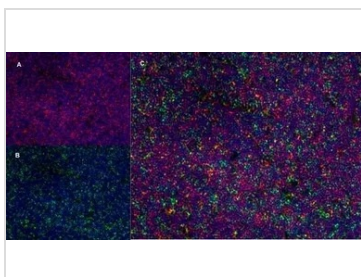
IHC-Fr analysis of rat lymph node with Mouse anti Rat CD163 antibody, clone ED2 , red in A and Mouse anti Rat CD8 antibody, clone OX-8 (GTx41830), green in B. C is the merged image with nuclei counter-stained blue using DAPI.


GTx41830 IHC-Fr Image

IHC-Fr analysis of rat lymph node with Mouse anti Rat CD25 antibody, clone OX-35, red in A and Mouse anti Rat CD8 antibody, clone OX-8 (GTx41830), green in B. C is the merged image with nuclei counterstained blue using DAPI. High power


GTx41830 IHC-Fr Image

IHC-Fr analysis of rat lymph node with Mouse anti Rat CD25 antibody, clone OX-35 , red in A and Mouse anti Rat CD8 antibody, clone OX-8 (GTx41830), green in B. C is the merged image with nuclei counterstained blue using DAPI. Low power


GTx41830 IHC-Fr Image

IHC-Fr analysis of rat lymph node with Mouse anti Rat CD25 antibody, clone OX-35 , red in A and Mouse anti Rat CD8 antibody, clone OX-8 (GTx41830), green in B. C is the merged image with nuclei counterstained blue using DAPI. Low power



For full product information, images and publications, please visit our [website](https://www.genetex.com).