

CD68 antibody [FA-11]

Cat. No. GTX41866

Host	Rat
Clonality	Monoclonal
Isotype	IgG2a
Applications	WB, ICC/IF, IHC-P, IHC-Fr, FCM, IP
Reactivity	Mouse

References (11)

Package

250 µg

Applications

Application Note

*Optimal dilutions/concentrations should be determined by the researcher.

Suggested dilution	Recommended dilution
WB	Assay dependent
ICC/IF	Assay dependent
IHC-P	Assay dependent
IHC-Fr	Assay dependent
FCM	1/50-1/100
IP	Assay dependent

Note : PFA fixed tissue samples: Include proteolytic antigen retrieval using pronase if needed.**Acetone or methanol fixed tissue samples: without any antigen retrieval****Membrane permeabilisation is required for this application. Use 10µl of the suggested working dilution to label 10⁶ cells in 100µl.**

Not tested in other applications.

Calculated MW 35 kDa. ([Note](#))

Properties

Form	Liquid
Buffer	PBS
Preservative	0.09% Sodium azide
Storage	Store as concentrated solution. Centrifuge briefly prior to opening vial. For short-term storage (1-2 weeks), store at 4°C. For long-term storage, aliquot and store at -20°C or below. Avoid multiple freeze-thaw cycles.
Concentration	1.0 mg/ml (Please refer to the vial label for the specific concentration.)
Immunogen	Purified Concanavalin A acceptor glycoprotein from P815 cell line.
Purification	Protein G purified From tissue culture supernatant



For full product information, images and publications, please visit our [website](#).

Conjugation

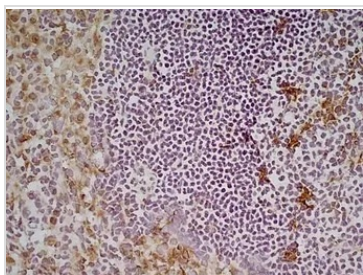
Unconjugated

Note

For laboratory research use only. Not for any clinical, therapeutic, or diagnostic use in humans or animals. Not for animal or human consumption.

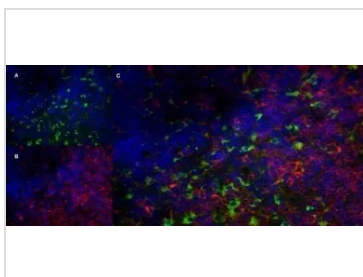
Purchasers shall not, and agree not to enable third parties to, analyze, copy, reverse engineer or otherwise attempt to determine the structure or sequence of the product.

DATA IMAGES



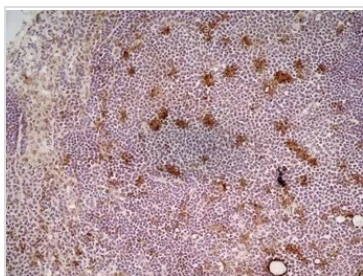
GTx41866 IHC-Fr Image

IHC-Fr analysis of mouse lymph node tissue using GTx41866 CD68 antibody [FA-11].



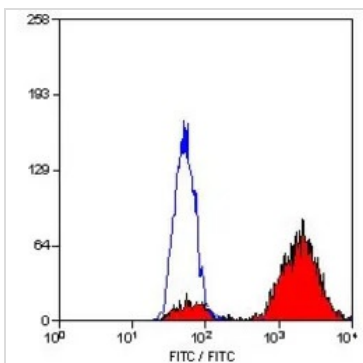
GTx41866 IHC-Fr Image

IHC-Fr analysis of a mouse lymph node with Rat anti Mouse CD68 antibody, clone FA11 (GTx41866), green in A and Rat anti Mouse CD8 antibody, clone YTS105.18 (GTx74642), red in B. C is the merged image with nuclei counterstained blue using DAPI. High power



GTx41866 IHC-Fr Image

IHC-Fr analysis of mouse lymph node tissue using GTx41866 CD68 antibody [FA-11] at 1:100



GTx41866 FCM Image

FACS analysis of mouse peritoneal macrophages using GTx41866 CD68 antibody [FA-11].



For full product information, images and publications, please visit our [website](https://www.genetex.com).