

## CD68 antibody [ED1]

Cat. No. GTX41868

<b>Host</b>	Mouse
<b>Clonality</b>	Monoclonal
<b>Isotype</b>	IgG1
<b>Applications</b>	WB, ICC/IF, IHC-P, IHC-Fr, FCM, IP, RIA
<b>Reactivity</b>	Human, Rat, Bovine

References ( 15 )

Package

100 µg

## Applications

## Application Note

\*Optimal dilutions/concentrations should be determined by the researcher.

Suggested dilution	Recommended dilution
WB	Assay dependent
ICC/IF	Assay dependent
IHC-P	Assay dependent
IHC-Fr	Assay dependent
FCM	1/50-1/100
IP	Assay dependent
RIA	Assay dependent

**Note : Recommend a proteolytic antigen retrieval.****Membrane permeabilisation is required for this application. Use 10µl of the suggested working dilution to label 10<sup>6</sup> cells in 100µl.**

Not tested in other applications.

**Calculated MW** 37 kDa. ( [Note](#) )

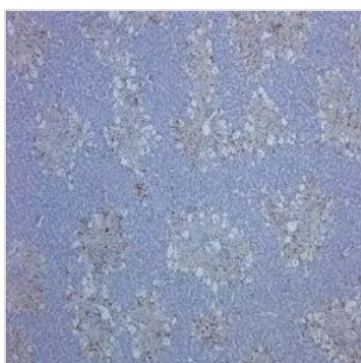
## Properties

<b>Form</b>	Liquid
<b>Buffer</b>	PBS
<b>Preservative</b>	0.09% Sodium azide
<b>Storage</b>	Store as concentrated solution. Centrifuge briefly prior to opening vial. For short-term storage (1-2 weeks), store at 4°C. For long-term storage, aliquot and store at -20°C or below. Avoid multiple freeze-thaw cycles.
<b>Concentration</b>	0.5 mg/ml (Please refer to the vial label for the specific concentration.)
<b>Immunogen</b>	Rat spleen cells

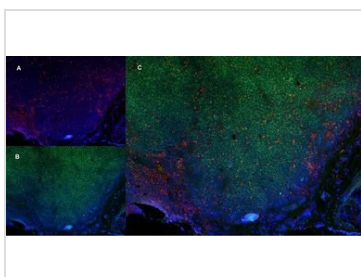


For full product information, images and publications, please visit our [website](#).

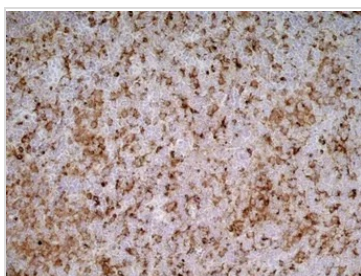
<b>Purification</b>	Protein A purified From tissue culture supernatant
<b>Conjugation</b>	Unconjugated
<b>Note</b>	For laboratory research use only. Not for any clinical, therapeutic, or diagnostic use in humans or animals. Not for animal or human consumption.  Purchasers shall not, and agree not to enable third parties to, analyze, copy, reverse engineer or otherwise attempt to determine the structure or sequence of the product.

**DATA IMAGES**

**GTx41868 IHC-P Image**

IHC analysis of rat liver, with induced hepatocellular damage tissue using GTx41868 CD68 antibody [ED1].


**GTx41868 IHC-Fr Image**

IHC-Fr analysis of rat lymph node tissue using GTx41868 CD68 antibody (red in A) and Mouse anti Rat CD4 (Green in B). C is the merged image with nuclei counter-stained blue using DAPI. Low power.


**GTx41868 IHC-Fr Image**

IHC-Fr analysis of rat lymph node tissue using GTx41868 CD68 antibody [ED1].



For full product information, images and publications, please visit our [website](#).