

CD52 antibody [YTH34.5] (Low endotoxin, azide free)

Cat. No. GTX41920

Host	Rat
Clonality	Monoclonal
Isotype	IgG2b
Applications	WB, IHC-P, IHC-Fr, FCM, IP, ELISA, Cytotoxic Assay, IHC (Resin sections)
Reactivity	Human, Rhesus Monkey

Package
100 µg

Applications

Application Note

*Optimal dilutions/concentrations should be determined by the researcher.

Suggested dilution	Recommended dilution
WB	Assay dependent
IHC-P	Assay dependent
IHC-Fr	Assay dependent
FCM	1/50-1/100
IP	Assay dependent
ELISA	Assay dependent
Cytotoxic Assay	50µg/ml (Use human serum as complement source)
IHC (Resin sections)	Assay dependent

Note : Use 10µl of the suggested working dilution to label 10⁶ cells in 100µl.

Not tested in other applications.

Calculated MW 7 kDa. ([Note](#))

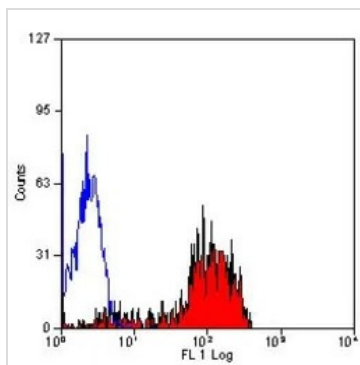
Properties

Form	Liquid
Buffer	PBS
Preservative	No preservatives
Storage	Store as concentrated solution. Centrifuge briefly prior to opening vial. For short-term storage (1-2 weeks), store at 4°C. For long-term storage, aliquot and store at -20°C or below. Avoid multiple freeze-thaw cycles.
Concentration	1.0 mg/ml (Please refer to the vial label for the specific concentration.)
Immunogen	Human lymphocytes.

For full product information, images and publications, please visit our [website](#).

Purification	Protein A purified From tissue culture supernatant
Endotoxin	< 0.01 EU/μg (determined by the LAL assay)
Conjugation	Unconjugated
Note	For laboratory research use only. Not for any clinical, therapeutic, or diagnostic use in humans or animals. Not for animal or human consumption. Purchasers shall not, and agree not to enable third parties to, analyze, copy, reverse engineer or otherwise attempt to determine the structure or sequence of the product.

DATA IMAGES



GTX41920 FCM Image

FACS analysis of human peripheral blood lymphocytes using GTX41920 CD52 antibody [YTH34.5] (Low endotoxin, azide free).



For full product information, images and publications, please visit our [website](#).