

NHE3 antibody

Cat. No. GTX41967

Host	Rabbit
Clonality	Polyclonal
Isotype	IgG
Applications	WB, ICC/IF, IHC-P
Reactivity	Mouse, Rat

References (4)

Package

100 µl

Applications

Application Note

We recommend a working dilution of 1:1000 (WB).

Calculated MW 93 kDa. ([Note](#))

Properties

Form	Liquid
Buffer	Rabbit immunoglobulin, 50% Glycerol
Preservative	No preservative
Storage	Store as concentrated solution. Centrifuge briefly prior to opening vial. For short-term storage (1-2 weeks), store at 4°C. For long-term storage, aliquot and store at -20°C or below. Avoid multiple freeze-thaw cycles.
Concentration	Batch dependent (Please refer to the vial label for the specific concentration.)
Immunogen	AA809 to 831 of rat sequence
Purification	Affinity purified
Conjugation	Unconjugated

Note

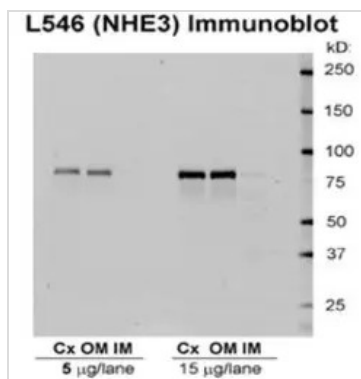
For laboratory research use only. Not for any clinical, therapeutic, or diagnostic use in humans or animals. Not for animal or human consumption.

Purchasers shall not, and agree not to enable third parties to, analyze, copy, reverse engineer or otherwise attempt to determine the structure or sequence of the product.



For full product information, images and publications, please visit our [website](#).

DATA IMAGES



GTx41967 WB Image

Western blot analysis of NHE3 in rat kidney tissues using a 1:1000 dilution of GTx41967.



For full product information, images and publications, please visit our [website](#).