

# ENaC Gamma antibody

**Cat. No. GTX41972**

<b>Host</b>	Rabbit
<b>Clonality</b>	Polyclonal
<b>Isotype</b>	IgG
<b>Applications</b>	WB, ICC/IF, IHC
<b>Reactivity</b>	Mouse, Rat

**Package**  
100 µl

## Applications

### Application Note

We recommend a working dilution of 1:1000 (WB).

**Calculated MW** 74 kDa. ( [Note](#) )

## Properties

<b>Form</b>	Liquid
<b>Buffer</b>	Rabbit immunoglobulin, 50% Glycerol
<b>Preservative</b>	No preservatives
<b>Storage</b>	Store as concentrated solution. Centrifuge briefly prior to opening vial. For short-term storage (1-2 weeks), store at 4°C. For long-term storage, aliquot and store at -20°C or below. Avoid multiple freeze-thaw cycles.
<b>Concentration</b>	Batch dependent (Please refer to the vial label for the specific concentration.)
<b>Immunogen</b>	AA629-650 of the rat sequence
<b>Purification</b>	Affinity purified
<b>Conjugation</b>	Unconjugated

### Note

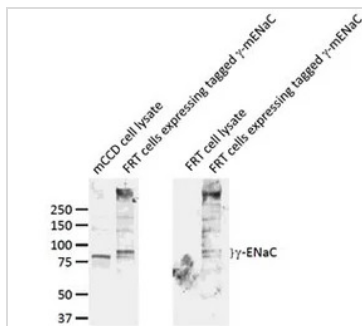
For laboratory research use only. Not for any clinical, therapeutic, or diagnostic use in humans or animals. Not for animal or human consumption.

Purchasers shall not, and agree not to enable third parties to, analyze, copy, reverse engineer or otherwise attempt to determine the structure or sequence of the product.



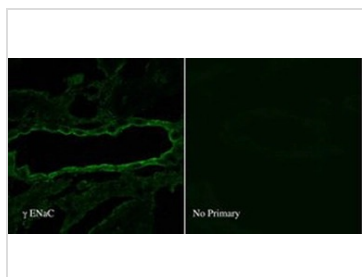
For full product information, images and publications, please visit our [website](#).

## DATA IMAGES



### GTx41972 WB Image

Western blot analysis of ENaC Gamma in mouse mCCD and FRT cells using a 1:1000 dilution of GTx41972.



### GTx41972 ICC/IF Image

IF analysis of ENaC Gamma in rat kidney tissue using a dilution of GTx41972.



For full product information, images and publications, please visit our [website](#).