

HCN1 antibody [S70-28]

Cat. No. GTX41985

Host	Mouse
Clonality	Monoclonal
Isotype	IgG1
Applications	WB, IHC-Fr, IP, IHC
Reactivity	Human, Mouse, Rat

Package
100 µg

Applications

Application Note

We recommend a working dilution of 1-10ug/mL (WB), 0.1-1.0ug/mL (Perox) (IHC/ICC), 1.0-10ug/mL (IF).

Calculated MW	102 kDa. (Note)
Product Note	No cross-reactivity against HCN2

Properties

Form	Liquid
Buffer	PBS, 50% Glycerol
Preservative	No preservatives
Storage	Store as concentrated solution. Centrifuge briefly prior to opening vial. For short-term storage (1-2 weeks), store at 4°C. For long-term storage, aliquot and store at -20°C or below. Avoid multiple freeze-thaw cycles.
Concentration	1 mg/ml (Please refer to the vial label for the specific concentration.)
Immunogen	Fusion protein amino acids 778-910 (C terminus) of rat HCN1, accession number Q9JKBO
Purification	Protein G Purified
Conjugation	Unconjugated

Note

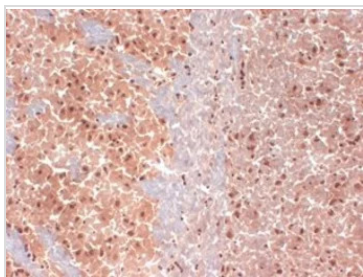
For laboratory research use only. Not for any clinical, therapeutic, or diagnostic use in humans or animals. Not for animal or human consumption.

Purchasers shall not, and agree not to enable third parties to, analyze, copy, reverse engineer or otherwise attempt to determine the structure or sequence of the product.



For full product information, images and publications, please visit our [website](#).

DATA IMAGES



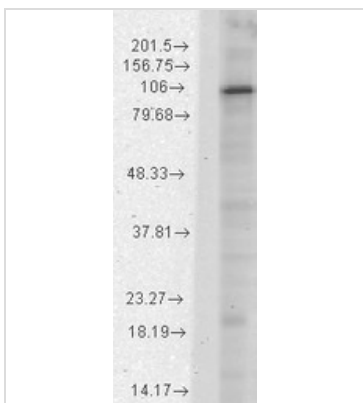
GTX41985 IHC-Fr Image

IHC analysis of HCN1 in frozen sections of mouse brain extract using GTX41985.



GTX41985 IHC Image

IHC analysis of HCN1 using GTX41985, tested on mouse cerebellum. Strong cytoplasm staining of the cerebellum giant neurons.



GTX41985 WB Image

Western blot analysis of HCN1 in rat brain membrane lysates using a 1:1000 dilution of GTX41985.



For full product information, images and publications, please visit our [website](https://www.genetex.com).