

# HCN2 antibody [S71-37]

**Cat. No. GTX41986**

<b>Host</b>	Mouse
<b>Clonality</b>	Monoclonal
<b>Isotype</b>	IgG1
<b>Applications</b>	WB, ICC/IF, IHC-Fr, IP
<b>Reactivity</b>	Human, Mouse, Rat

**Package**  
100 µg

## Applications

### Application Note

We recommend a working dilution of 1-10ug/mL (WB), 0.1-1.0ug/mL (Perox) (IHC/ICC), 1.0-10ug/mL (IF).

<b>Calculated MW</b>	95 kDa. ( <a href="#">Note</a> )
<b>Product Note</b>	No cross-reactivity against HCN1

## Properties

<b>Form</b>	Liquid
<b>Buffer</b>	PBS, 50% Glycerol
<b>Preservative</b>	No preservatives
<b>Storage</b>	Store as concentrated solution. Centrifuge briefly prior to opening vial. For short-term storage (1-2 weeks), store at 4°C. For long-term storage, aliquot and store at -20°C or below. Avoid multiple freeze-thaw cycles.
<b>Concentration</b>	1 mg/ml (Please refer to the vial label for the specific concentration.)
<b>Immunogen</b>	Fusion protein amino acids 761-863 of rat HCN2, accession number Q9JKA9
<b>Purification</b>	Protein G Purified
<b>Conjugation</b>	Unconjugated

### Note

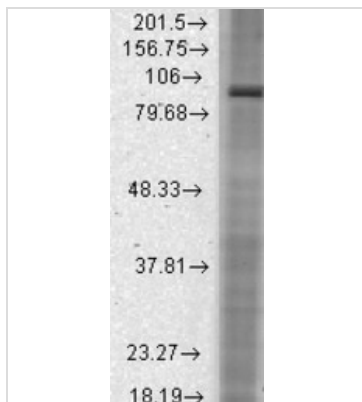
For laboratory research use only. Not for any clinical, therapeutic, or diagnostic use in humans or animals. Not for animal or human consumption.

Purchasers shall not, and agree not to enable third parties to, analyze, copy, reverse engineer or otherwise attempt to determine the structure or sequence of the product.



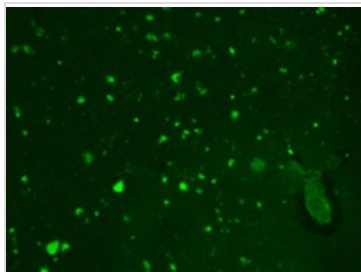
For full product information, images and publications, please visit our [website](#).

## DATA IMAGES



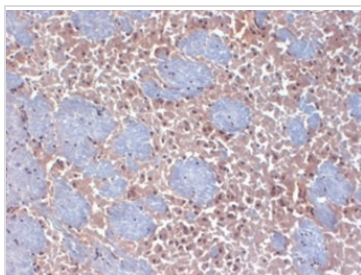
### GTX41986 WB Image

Western blot analysis of HCN2 in rat brain membrane lysates using a 1:1000 dilution of GTX41986.



### GTX41986 ICC/IF Image

IF analysis of HCN2 in human hippocampal tissues using GTX41986.



### GTX41986 IHC-Fr Image

IHC analysis of HCN2 in frozen sections of mouse brain using GTX41986.



For full product information, images and publications, please visit our [website](#).