

KCNQ1 antibody [S37A-10]

Cat. No. GTX41988

| | |
|---------------------|-------------------|
| Host | Mouse |
| Clonality | Monoclonal |
| Isotype | IgG1 |
| Applications | WB, IP, IHC |
| Reactivity | Human, Mouse, Rat |

Package
100 µg

Applications

Application Note

We recommend a working dilution of 1-10ug/mL (WB), 0.1-1.0ug/mL (Perox) (IHC/ICC), 1.0-10ug/mL (IF).

Calculated MW 75 kDa. ([Note](#))

Properties

| | |
|----------------------|--|
| Form | Liquid |
| Buffer | PBS, 50% Glycerol |
| Preservative | No preservatives |
| Storage | Store as concentrated solution. Centrifuge briefly prior to opening vial. For short-term storage (1-2 weeks), store at 4°C. For long-term storage, aliquot and store at -20°C or below. Avoid multiple freeze-thaw cycles. |
| Concentration | 1 mg/ml (Please refer to the vial label for the specific concentration.) |
| Immunogen | Fusion protein amino acids 2-101 of human KCNQ1, accession number P51787 |
| Purification | Protein G Purified |
| Conjugation | Unconjugated |

Note

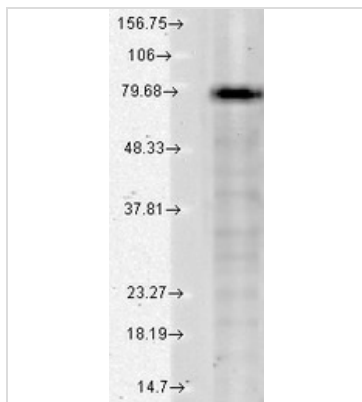
For laboratory research use only. Not for any clinical, therapeutic, or diagnostic use in humans or animals. Not for animal or human consumption.

Purchasers shall not, and agree not to enable third parties to, analyze, copy, reverse engineer or otherwise attempt to determine the structure or sequence of the product.



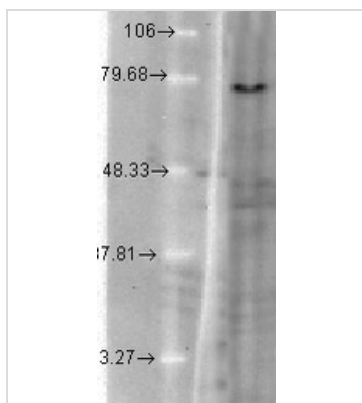
For full product information, images and publications, please visit our [website](#).

DATA IMAGES



GTX41988 WB Image

Western blot analysis of KCNQ1 in a human cell line mix using a 1:1000 dilution of GTX41988.



GTX41988 WB Image

Western blot analysis of KCNQ1 in T-Cho cells using a 1:1000 dilution of GTX41988.



For full product information, images and publications, please visit our [website](https://www.genetex.com).