

Kir2.1 antibody [S112B-14]

Cat. No. GTX41991

Host	Mouse
Clonality	Monoclonal
Isotype	IgG1
Applications	WB, ICC/IF, IHC-P
Reactivity	Human, Mouse, Rat

Package
100 µg

Applications

Application Note

*Optimal dilutions/concentrations should be determined by the researcher.

Suggested dilution	Recommended dilution
WB	1:1000
ICC/IF	1:100
IHC-P	1:1000

Not tested in other applications.

Calculated MW	48 kDa. (Note)
Product Note	No cross-reactivity against Kir2.2 or Kir2.3

Properties

Form	Liquid
Buffer	PBS, 50% Glycerol
Preservative	No preservatives
Storage	Store as concentrated solution. Centrifuge briefly prior to opening vial. For short-term storage (1-2 weeks), store at 4°C. For long-term storage, aliquot and store at -20°C or below. Avoid multiple freeze-thaw cycles.
Concentration	1 mg/ml (Please refer to the vial label for the specific concentration.)
Immunogen	Fusion protein amino acids 41-64 and 189-428 of mouse Kir2.1, accession number NP_032451.
Purification	Protein G purified
Conjugation	Unconjugated

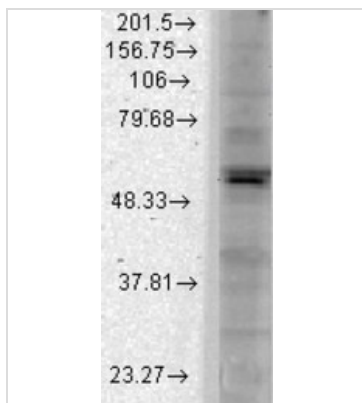
For full product information, images and publications, please visit our [website](#).

For laboratory research use only. Not for any clinical, therapeutic, or diagnostic use in humans or animals. Not for animal or human consumption.

Note

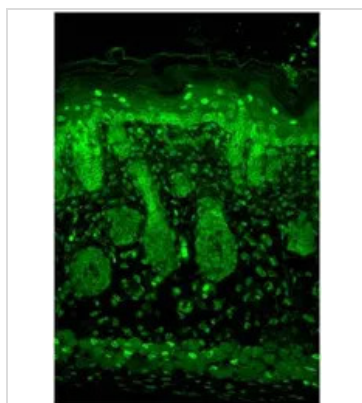
Purchasers shall not, and agree not to enable third parties to, analyze, copy, reverse engineer or otherwise attempt to determine the structure or sequence of the product.

DATA IMAGES



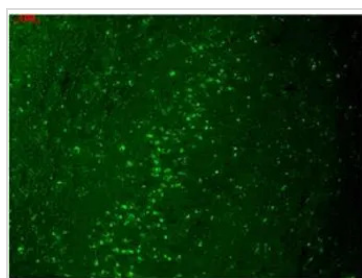
GTX41991 WB Image

Western blot analysis of Kir2.1 in COS transient cells using a 1:1000 dilution of GTX41991.



GTX41991 IHC-P Image

IHC-P analysis of mouse backskin section using GTX41991 Kir2.1 antibody [S112B-14] at 1:100.



GTX41991 IHC-P Image

IHC-P analysis of human hippocampus section using GTX41991 Kir2.1 antibody [S112B-14] at 1:1000.



For full product information, images and publications, please visit our [website](https://www.genetex.com).