

## Cav beta 2 antibody [S8B-1]

Cat. No. GTX42011

Host	Mouse
Clonality	Monoclonal
Isotype	IgG1
Applications	WB, IP, IHC
Reactivity	Human, Mouse, Rat

Package  
100 µg

## Applications

## Application Note

We recommend a working dilution of 1-10ug/mL (WB), 0.1-1.0ug/mL (Perox) (IHC/ICC), 1.0-10ug/mL (IF).

Calculated MW	73 kDa. ( <a href="#">Note</a> )
Product Note	No cross reactivity against Cav

## Properties

Form	Liquid
Buffer	PBS, 50% Glycerol
Preservative	No preservatives
Storage	Store as concentrated solution. Centrifuge briefly prior to opening vial. For short-term storage (1-2 weeks), store at 4°C. For long-term storage, aliquot and store at -20°C or below. Avoid multiple freeze-thaw cycles.
Concentration	1 mg/ml (Please refer to the vial label for the specific concentration.)
Immunogen	Synthetic peptide amino acids 189-205 of rat CavBeta2, accession numer NP_446303
Purification	Protein G Purified
Conjugation	Unconjugated

## Note

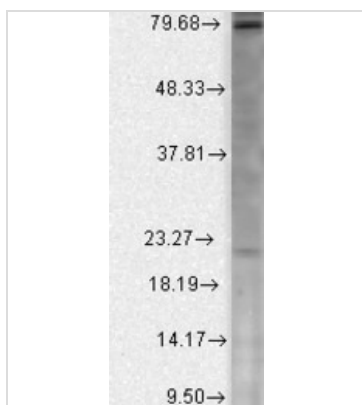
For laboratory research use only. Not for any clinical, therapeutic, or diagnostic use in humans or animals. Not for animal or human consumption.

Purchasers shall not, and agree not to enable third parties to, analyze, copy, reverse engineer or otherwise attempt to determine the structure or sequence of the product.



For full product information, images and publications, please visit our [website](#).

## DATA IMAGES



### GTx42011 WB Image

Western blot analysis of CavBeta2 in a human cell line mix using a 1:1000 dilution of GTx42011.



For full product information, images and publications, please visit our [website](#).