

## GABA A Receptor beta 3 antibody [S87-25]

Cat. No. GTX42018

Host	Mouse
Clonality	Monoclonal
Isotype	IgG1
Application	WB, ICC/IF, IHC-Fr
Reactivity	Human, Mouse, Rat

**Package**  
100 µg

## APPLICATION

## Application Note

We recommend a working dilution of 1ug/mL (WB), 0.1-1ug/mL (IHC/ICC), 1-10ug/mL (IF).

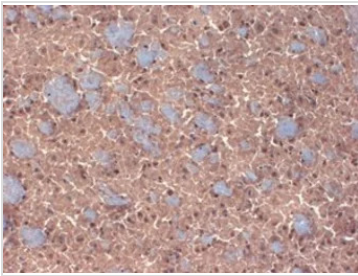
Calculated MW	54 kDa. ( <a href="#">Note</a> )
Product Note	No cross-reactivity against GABA-A-R-Beta 2 or -Beta1.

## PROPERTIES

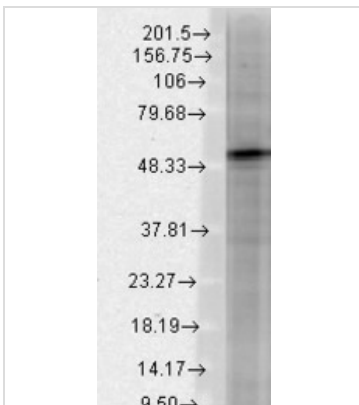
Form	Liquid
Buffer	PBS, 50% Glycerol
Preservative	No preservative
Storage	Store as concentrated solution. Centrifuge briefly prior to opening vial. For short-term storage (1-2 weeks), store at 4°C. For long-term storage, aliquot and store at -20°C or below. Avoid multiple freeze-thaw cycles.
Concentration	1 mg/ml (Please refer to the vial label for the specific concentration.)
Immunogen	Fusion protein amino acids 370-433 of mouse GABA A Receptor beta 3, accession number AAB60502.
Purification	Protein G Purified
Conjugation	Unconjugated
Note	<p>For laboratory research use only. Not for any clinical, therapeutic, or diagnostic use in humans or animals. Not for animal or human consumption.</p> <p>Purchasers shall not, and agree not to enable third parties to, analyze, copy, reverse engineer or otherwise attempt to determine the structure or sequence of the product.</p>



For full product information, images and publications, please visit our [website](#).

**DATA IMAGES**

**GTX42018 IHC-Fr Image**

IHC analysis of GABA(A)R Beta 3 in frozen sections of mouse brain extract using GTX42018.


**GTX42018 WB Image**

Western blot analysis of GABA (A)R Beta3 in rat brain membrane lysates using a 1:1000 dilution of GTX42018.



For full product information, images and publications, please visit our [website](https://www.genetex.com).