

GABA A Receptor delta antibody [S151-3]

Cat. No. GTX42024

Host	Mouse
Clonality	Monoclonal
Isotype	IgG2a
Applications	WB, ICC/IF
Reactivity	Mouse, Rat

Package
100 µg

Applications

Application Note

We recommend a working dilution of 1-10ug/mL (WB), 0.1-1.0ug/mL (Perox) (IHC/ICC), 1.0-10ug/mL (IF).

Calculated MW 51 kDa. ([Note](#))

Product Note No cross-reactivity against GABA-A-R-Beta 2 or -Beta3.

Properties

Form	Liquid
Buffer	PBS, 50% Glycerol
Preservative	No preservatives
Storage	Store as concentrated solution. Centrifuge briefly prior to opening vial. For short-term storage (1-2 weeks), store at 4°C. For long-term storage, aliquot and store at -20°C or below. Avoid multiple freeze-thaw cycles.
Concentration	1 mg/ml (Please refer to the vial label for the specific concentration.)
Immunogen	Synthetic peptide amino acids 15-34 of rat GABA-A-R-Delta, accession number P18506
Purification	Protein G Purified
Conjugation	Unconjugated

Note

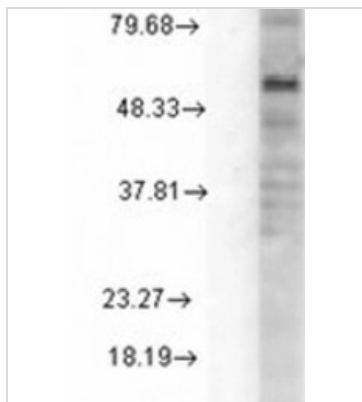
For laboratory research use only. Not for any clinical, therapeutic, or diagnostic use in humans or animals. Not for animal or human consumption.

Purchasers shall not, and agree not to enable third parties to, analyze, copy, reverse engineer or otherwise attempt to determine the structure or sequence of the product.



For full product information, images and publications, please visit our [website](#).

DATA IMAGES



GTx42024 WB Image

Western blot analysis of GABA(A)R Delta in rat cell line mix using a 1:1000 dilution of GTx42024.



For full product information, images and publications, please visit our [website](#).