

CD36 antibody [SMØ]

Cat. No. GTX42050

Host	Mouse
Clonality	Monoclonal
Isotype	IgM
Applications	IHC-Fr, FCM
Reactivity	Human

Package

25 µg

Applications

Application Note

*Optimal dilutions/concentrations should be determined by the researcher.

Suggested dilution	Recommended dilution
IHC-Fr	Assay dependent
FCM	1/50-1/100

Note : Use 10µl of the suggested working dilution to label 10⁶ cells or 100µl whole blood.

Not tested in other applications.

Properties

Form	Liquid
Buffer	PBS
Preservative	0.09% Sodium azide
Storage	Store as concentrated solution. Centrifuge briefly prior to opening vial. Store at 4°C. DO NOT FREEZE.
Concentration	1 mg/ml (Please refer to the vial label for the specific concentration.)
Immunogen	Human tonsil cells and peripheral blood mononuclear cells.
Purification	Ammonium sulphate precipitation From tissue culture supernatant
Conjugation	Unconjugated

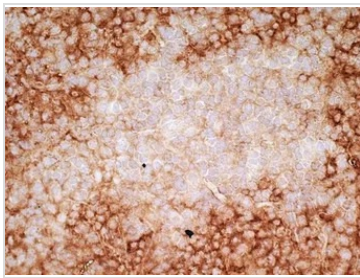
Note

For laboratory research use only. Not for any clinical, therapeutic, or diagnostic use in humans or animals. Not for animal or human consumption.

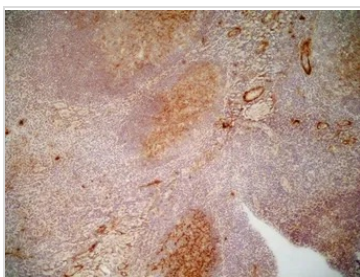
Purchasers shall not, and agree not to enable third parties to, analyze, copy, reverse engineer or otherwise attempt to determine the structure or sequence of the product.



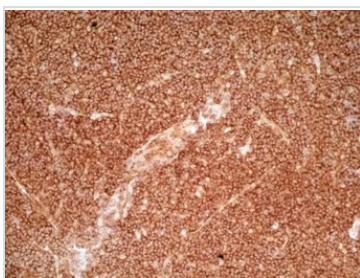
For full product information, images and publications, please visit our [website](#).

DATA IMAGES

GTX42050 IHC-Fr Image

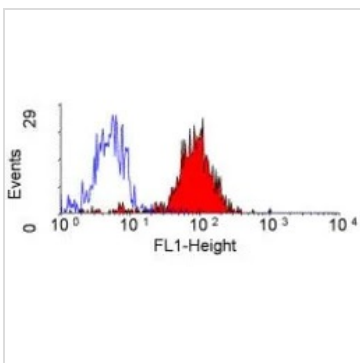
IHC-Fr analysis of human tonsil tissue using GTX42050 CD36 antibody [SMO].


GTX42050 IHC-Fr Image

IHC-Fr analysis of human tonsil tissue using GTX42050 CD36 antibody [SMO].


GTX42050 IHC-Fr Image

IHC-Fr analysis of human tonsil tissue using GTX42050 CD36 antibody [SMO].


GTX42050 FCM Image

FACS analysis of human peripheral blood monocytes using GTX42050 CD36 antibody [SMO].



For full product information, images and publications, please visit our [website](https://www.genetex.com).