

CD34 antibody [QBEnd/10]

Cat. No. GTX42055

| | |
|---------------------|---|
| Host | Mouse |
| Clonality | Monoclonal |
| Isotype | IgG1 |
| Applications | WB, ICC/IF, IHC-P, IHC-Fr, FCM, IP, EM |
| Reactivity | Human, Cynomolgus monkey, Rhesus Monkey |

References (1)

Package

25 µg

Applications

Application Note

*Optimal dilutions/concentrations should be determined by the researcher.

| Suggested dilution | Recommended dilution |
|--------------------|----------------------|
| WB | Assay dependent |
| ICC/IF | Assay dependent |
| IHC-P | 1/500-1/1,000 |
| IHC-Fr | Assay dependent |
| FCM | 1/100 1/200 |
| IP | Assay dependent |
| EM | Assay dependent |

Note : Use 10µl of the suggested working dilution to label 10⁶ cells in 100µl.

Not tested in other applications.

Calculated MW 41 kDa. ([Note](#))

Product Note

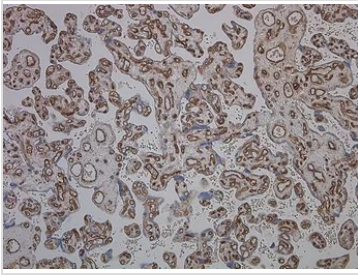
This antibody recognizes the human CD34. Clone QBEND/10 has been classified as binding to the class II epitope, resistant to neuraminidase treatment but sensitive to both glycoprotease and chymopapain digestion.

Properties

| | |
|----------------------|--|
| Form | Liquid |
| Buffer | PBS |
| Preservative | 0.09% Sodium azide |
| Storage | Store as concentrated solution. Centrifuge briefly prior to opening vial. For short-term storage (1-2 weeks), store at 4°C. For long-term storage, aliquot and store at -20°C or below. Avoid multiple freeze-thaw cycles. |
| Concentration | 1.0 mg/ml (Please refer to the vial label for the specific concentration.) |
| Immunogen | Human endothelial cell membrane vesicles. |

For full product information, images and publications, please visit our [website](#).

| | |
|---------------------|---|
| Purification | Protein A purified |
| Conjugation | Unconjugated |
| Note | <p>For laboratory research use only. Not for any clinical, therapeutic, or diagnostic use in humans or animals. Not for animal or human consumption.</p> <p>Purchasers shall not, and agree not to enable third parties to, analyze, copy, reverse engineer or otherwise attempt to determine the structure or sequence of the product.</p> |

DATA IMAGES

GTX42055 IHC-P Image

IHC-P analysis of placenta tissue using GTX42055 CD34 Class II antibody [QBEND/10].



For full product information, images and publications, please visit our [website](#).