

CD34 antibody [QBEnd/10]

Cat. No. GTX42056

Host	Mouse
Clonality	Monoclonal
Isotype	IgG1
Applications	WB, ICC/IF, IHC-P, IHC-Fr, FCM, IP, EM
Reactivity	Human, Cynomolgus monkey, Rhesus Monkey

References (1)

Package

200 µg

Applications

Application Note

*Optimal dilutions/concentrations should be determined by the researcher.

Suggested dilution	Recommended dilution
WB	Assay dependent
ICC/IF	Assay dependent
IHC-P	1/500-1/1,000
IHC-Fr	Assay dependent
FCM	1/100 1/200
IP	Assay dependent
EM	Assay dependent

Note : Use 10µl of the suggested working dilution to label 10⁶ cells in 100µl.

Not tested in other applications.

Calculated MW 41 kDa. ([Note](#))

Product Note This antibody recognizes the human CD34. Clone QBEND/10 has been classified as binding to the class II epitope, resistant to neuraminidase treatment but sensitive to both glycoprotease and chymopapain digestion.

Properties

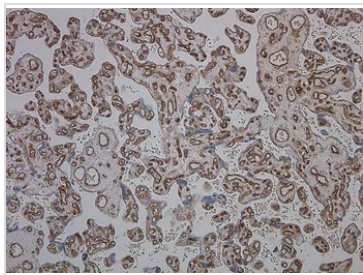
Form	Liquid
Buffer	PBS
Preservative	0.09% Sodium azide
Storage	Store as concentrated solution. Centrifuge briefly prior to opening vial. For short-term storage (1-2 weeks), store at 4°C. For long-term storage, aliquot and store at -20°C or below. Avoid multiple freeze-thaw cycles.
Concentration	1.0 mg/ml (Please refer to the vial label for the specific concentration.)
Immunogen	Human endothelial cell membrane vesicles.



For full product information, images and publications, please visit our [website](#).

Purification	Protein A purified
Conjugation	Unconjugated
Note	<p>For laboratory research use only. Not for any clinical, therapeutic, or diagnostic use in humans or animals. Not for animal or human consumption.</p> <p>Purchasers shall not, and agree not to enable third parties to, analyze, copy, reverse engineer or otherwise attempt to determine the structure or sequence of the product.</p>

DATA IMAGES



GTX42056 IHC-P Image

IHC-P analysis of placenta tissue using GTX42056 CD34 Class II antibody [QBEND/10].



For full product information, images and publications, please visit our [website](#).