

CD34 antibody [MEC14.7] (Low endotoxin, azide free)

Cat. No. GTX42057

Host	Rat
Clonality	Monoclonal
Isotype	IgG2a
Application	ICC/IF, IHC-P, FACS, IP, IHC
Reactivity	Human, Mouse, Rabbit

Reference (40)

Package

500 µg

APPLICATION

Application Note

*Optimal dilutions/concentrations should be determined by the researcher.

Suggested dilution	Recommended dilution
ICC/IF	Assay dependent
IHC-P	1/20-1/200
FACS	Assay dependent
IP	Assay dependent
IHC	Assay dependent

Not tested in other applications.

Calculated MW 41 kDa. ([Note](#))

Product Note This antibody recognizes a neuraminidase sensitive epitope.

PROPERTIES

Form	Liquid
Buffer	PBS
Preservative	No preservative
Storage	Store as concentrated solution. Centrifuge briefly prior to opening vial. For short-term storage (1-2 weeks), store at 4°C. For long-term storage, aliquot and store at -20°C or below. Avoid multiple freeze-thaw cycles.
Concentration	1.0 mg/ml (Please refer to the vial label for the specific concentration.)
Immunogen	T-end.1, a pMT transformed endothelial cell line.
Purification	Protein G purified From tissue culture supernatant
Endotoxin	< 0.01 EU/µg (determined by the LAL assay)



For full product information, images and publications, please visit our [website](#).

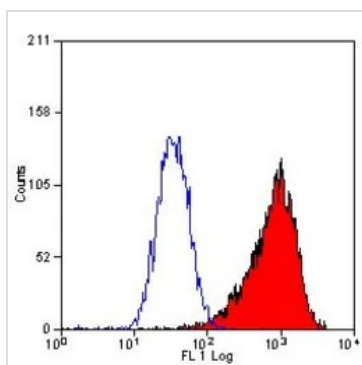
Conjugation

Unconjugated

Note

For laboratory research use only. Not for any clinical, therapeutic, or diagnostic use in humans or animals. Not for animal or human consumption.

Purchasers shall not, and agree not to enable third parties to, analyze, copy, reverse engineer or otherwise attempt to determine the structure or sequence of the product.

DATA IMAGES

GTX42057 FACS Image

FACS analysis of WEH1 cells using GTX42057 CD34 antibody [MEC14.7] (Low endotoxin, azide free).



For full product information, images and publications, please visit our [website](#).