

EpCAM antibody [VU-1D9] (Low endotoxin, azide free)

Cat. No. GTX42071

Host	Mouse
Clonality	Monoclonal
Isotype	IgG1
Applications	WB, ICC/IF, IHC-P, IHC-Fr, FCM, IP
Reactivity	Human

References (8)

Package

500 µg

Applications

Application Note

*Optimal dilutions/concentrations should be determined by the researcher.

Suggested dilution	Recommended dilution
WB	Assay dependent
ICC/IF	Assay dependent
IHC-P	Assay dependent
IHC-Fr	Assay dependent
FCM	1/10-1/200
IP	Assay dependent

Note : Use 10µl of the suggested working dilution to label 10⁶ cells in 100µl.

Not tested in other applications.

Calculated MW 35 kDa. ([Note](#))

Properties

Form	Liquid
Buffer	PBS
Preservative	No preservatives
Storage	Store as concentrated solution. Centrifuge briefly prior to opening vial. For short-term storage (1-2 weeks), store at 4°C. For long-term storage, aliquot and store at -20°C or below. Avoid multiple freeze-thaw cycles.
Concentration	1 mg/ml (Please refer to the vial label for the specific concentration.)
Immunogen	HG9 cell line (small cell lung carcinoma)
Purification	Protein G purified
Endotoxin	< 0.01 EU/µg (determined by the LAL assay)



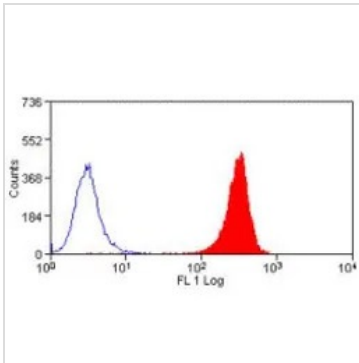
For full product information, images and publications, please visit our [website](#).

Conjugation Unconjugated

For laboratory research use only. Not for any clinical, therapeutic, or diagnostic use in humans or animals. Not for animal or human consumption.

Note Purchasers shall not, and agree not to enable third parties to, analyze, copy, reverse engineer or otherwise attempt to determine the structure or sequence of the product.

DATA IMAGES



GTX42071 FCM Image

FACS analysis of HT-29 cells using GTX42071 EpCAM antibody [VU-1D9] (Low endotoxin, azide free).



For full product information, images and publications, please visit our [website](#).