

CLEC10A antibody [ER-MP23]

Cat. No. GTX42095

Host	Rat
Clonality	Monoclonal
Isotype	IgG2a
Applications	ICC/IF, IHC-P, IHC-Fr, FCM
Reactivity	Mouse

Package

25 µg

Applications

Application Note

*Optimal dilutions/concentrations should be determined by the researcher.

Suggested dilution	Recommended dilution
ICC/IF	Assay dependent
IHC-P	Assay dependent
IHC-Fr	Assay dependent
FCM	1/100-1/200

Note : Use 10µl of the suggested working dilution to label 10⁶ cells in 100µl.

Not tested in other applications.

Product Note This antibody binds both MGL1 and MGL2 homologues.

Properties

Form	Liquid
Buffer	PBS
Preservative	0.09% Sodium azide
Storage	Store as concentrated solution. Centrifuge briefly prior to opening vial. For short-term storage (1-2 weeks), store at 4°C. For long-term storage, aliquot and store at -20°C or below. Avoid multiple freeze-thaw cycles.
Concentration	1.0 mg/ml (Please refer to the vial label for the specific concentration.)
Immunogen	Balb/c macrophage precursor cell hybrids.
Purification	Protein G purified From tissue culture supernatant
Conjugation	Unconjugated



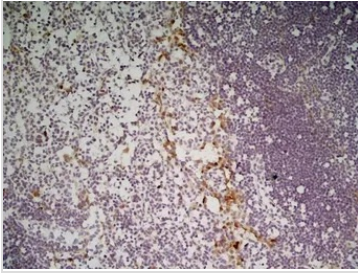
For full product information, images and publications, please visit our [website](#).

For laboratory research use only. Not for any clinical, therapeutic, or diagnostic use in humans or animals. Not for animal or human consumption.

Note

Purchasers shall not, and agree not to enable third parties to, analyze, copy, reverse engineer or otherwise attempt to determine the structure or sequence of the product.

DATA IMAGES

**GTX42095 IHC-P Image**

IHC analysis of mouse lymph node tissue using GTX42095 CLEC10A antibody [ER-MP23].



For full product information, images and publications, please visit our [website](#).