

## CD3 antibody [KT3] (Low endotoxin, azide free)

Cat. No. GTX42108

Host	Rat
Clonality	Monoclonal
Isotype	IgG2a
Applications	IHC-Fr, FCM
Reactivity	Mouse

Package  
500 µg

## Applications

## Application Note

\*Optimal dilutions/concentrations should be determined by the researcher.

Suggested dilution	Recommended dilution
IHC-Fr	Assay dependent
FCM	1/100

**Note : Use 10µl of the suggested working dilution to label 10<sup>6</sup> cells in 100µl.**

Not tested in other applications.

## Properties

Form	Liquid
Buffer	PBS
Preservative	No preservatives
Storage	Store as concentrated solution. Centrifuge briefly prior to opening vial. For short-term storage (1-2 weeks), store at 4°C. For long-term storage, aliquot and store at -20°C or below. Avoid multiple freeze-thaw cycles.
Concentration	1.0 mg/ml (Please refer to the vial label for the specific concentration.)
Immunogen	CBAT6 thymocytes.
Purification	Protein G purified From tissue culture supernatant
Endotoxin	< 0.01 EU/µg (determined by the LAL assay)
Conjugation	Unconjugated

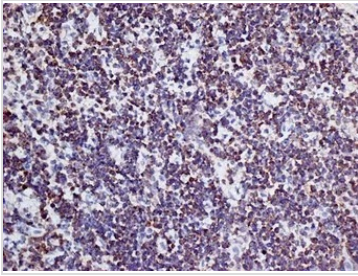
## Note

For laboratory research use only. Not for any clinical, therapeutic, or diagnostic use in humans or animals. Not for animal or human consumption.

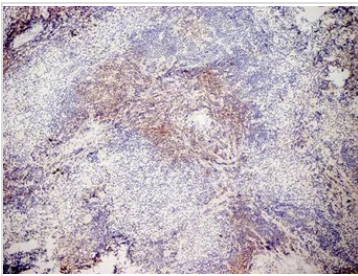
Purchasers shall not, and agree not to enable third parties to, analyze, copy, reverse engineer or otherwise attempt to determine the structure or sequence of the product.



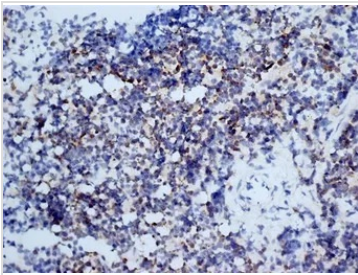
For full product information, images and publications, please visit our [website](#).

**DATA IMAGES**

**GTX42108 IHC-Fr Image**

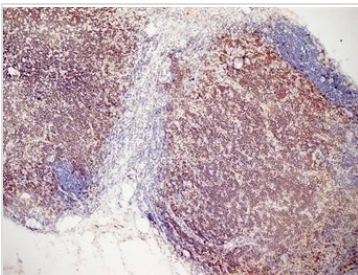
IHC-Fr analysis of mouse lymph node tissue using GTX42108 CD3 antibody [KT3] (Low endotoxin, azide free).


**GTX42108 IHC-Fr Image**

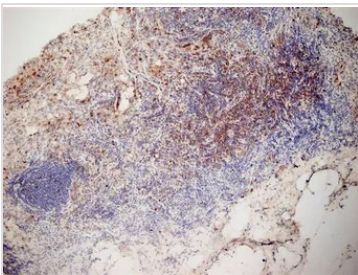
IHC-Fr analysis of mouse spleen tissue using GTX42108 CD3 antibody [KT3] (Low endotoxin, azide free).


**GTX42108 IHC-Fr Image**

IHC-Fr analysis of mouse spleen tissue using GTX42108 CD3 antibody [KT3] (Low endotoxin, azide free).


**GTX42108 IHC-Fr Image**

IHC-Fr analysis of mouse lymph node tissue using GTX42108 CD3 antibody [KT3] (Low endotoxin, azide free).


**GTX42108 IHC-Fr Image**

IHC-Fr analysis of mouse lymph node tissue using GTX42108 CD3 antibody [KT3] (Low endotoxin, azide free).



For full product information, images and publications, please visit our [website](https://www.genetex.com).