

CD3 epsilon antibody [CD3-12]

Cat. No. GTX42110

Host	Rat
Clonality	Monoclonal
Isotype	IgG1
Applications	WB, ICC/IF, IHC-P, IHC-Fr, FCM
Reactivity	Human, Mouse, Rabbit, Bovine, Cat, Dog, Chicken, Pig, Alpaca, Amazon Parrot, Bullfrog, Cynomolgus monkey, Duck, Great horned owl (Bubo virginianus), Harbour Porpoise, Horse, Koala, Raccoon, Rhesus Monkey, Sea Lion, Spotted Hyena, Xenopus

References (15)

Package

25 µg

Applications

Application Note

*Optimal dilutions/concentrations should be determined by the researcher.

Suggested dilution	Recommended dilution
WB	Assay dependent
ICC/IF	Assay dependent
IHC-P	1/100
IHC-Fr	1/100
FCM	1/50-1/100

Note : This product requires antigen retrieval using heat treatment prior to staining of paraffin sections. Tris/EDTA buffer pH 9.0 is recommended for this purpose.

Membrane permeabilization is required for this application.

Not tested in other applications.

Calculated MW	23 kDa. (Note)
Product Note	This antibody has been specifically raised against an epitope within the epsilon peptide chain, highly conserved among species clone CD3-12 has a very broad species crossreactivity for the CD3 marker.

Properties

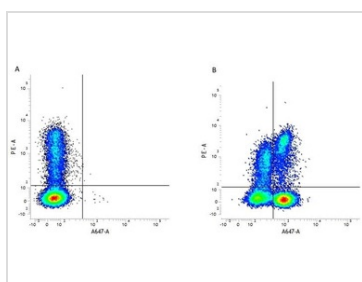
Form	Liquid
Buffer	PBS
Preservative	0.09% Sodium azide
Storage	Store as concentrated solution. Centrifuge briefly prior to opening vial. For short-term storage (1-2 weeks), store at 4°C. For long-term storage, aliquot and store at -20°C or below. Avoid multiple freeze-thaw cycles.
Concentration	1.0 mg/ml (Please refer to the vial label for the specific concentration.)



For full product information, images and publications, please visit our [website](#).

Immunogen	Synthetic peptide sequence derived from cytoplasmic epitope of CD3 (Glu-Arg-Pro-Pro-Pro-Val-Pro-Asn-Pro-Asp-Tyr-Glu-Pro-Cys) (ERPPVPNPDIYEPD)
Purification	Protein G purified From tissue culture supernatant
Conjugation	Unconjugated
Note	For laboratory research use only. Not for any clinical, therapeutic, or diagnostic use in humans or animals. Not for animal or human consumption. Purchasers shall not, and agree not to enable third parties to, analyze, copy, reverse engineer or otherwise attempt to determine the structure or sequence of the product.

DATA IMAGES

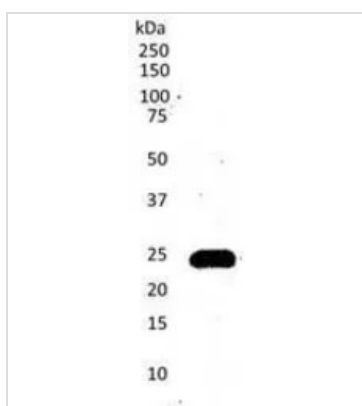


GTX42110 FCM Image

FACS analysis of red cell lysed human peripheral blood gated on leukocytes using GTX42110 CD3 antibody [CD3-12].

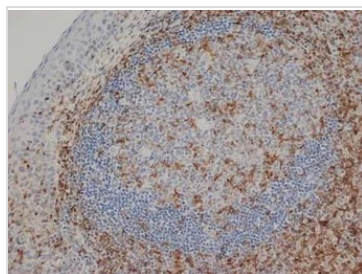
Figure A : RPE conjugated Mouse anti Human CD8 and Alexa Fluor 647 conjugated Rat IgG1 isotype control.

Figure B : RPE conjugated Mouse anti Human CD8 and Alexa Fluor 647 conjugated Rat anti Human CD3 (GTX42110).



GTX42110 WB Image

WB analysis of Jurkat cell lysate using GTX42110 CD3 antibody [CD3-12].



GTX42110 IHC-P Image

IHC-P analysis of human tonsil tissue using GTX42110 CD3 antibody. Heat mediated antigen retrieval using EDTA buffer pH9.0.



For full product information, images and publications, please visit our [website](https://www.genetex.com).