

## PD-L1 antibody [MIH6]

Cat. No. GTX42160

Host	Rat
Clonality	Monoclonal
Isotype	IgG2a
Application	IHC-Fr, FACS, IP
Reactivity	Mouse

Package  
100 µg

## APPLICATION

## Application Note

\*Optimal dilutions/concentrations should be determined by the researcher.

Suggested dilution	Recommended dilution
IHC-Fr	Assay dependent
FACS	1/10-1/100
IP	Assay dependent

**Note : Use 10µl of the suggested working dilution to label 10<sup>6</sup> cells in 100µl.**

Not tested in other applications.

**Calculated MW** 33 kDa. ( [Note](#) )

## PROPERTIES

Form	Liquid
Buffer	PBS, 0.09% Sodium Azide
Storage	Store as concentrated solution. Centrifuge briefly prior to opening vial. For short-term storage (1-2 weeks), store at 4°C. For long-term storage, aliquot and store at -20°C or below. Avoid multiple freeze-thaw cycles.
Concentration	1.0 mg/ml (Please refer to the vial label for the specific concentration.)
Immunogen	Mouse PD-L1 - transfected L5178Y cells.
Purification	Protein G purified From tissue culture supernatant
Conjugation	Unconjugated

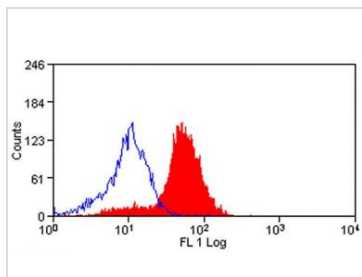
## Note

For laboratory research use only. Not for any clinical, therapeutic, or diagnostic use in humans or animals. Not for animal or human consumption.

Purchasers shall not, and agree not to enable third parties to, analyze, copy, reverse engineer or otherwise attempt to determine the structure or sequence of the product.



For full product information, images and publications, please visit our [website](#).

**DATA IMAGES**

**GTX42160 FACS Image**

FACS analysis of mouse peripheral blood lymphocytes using GTX42160 PD-L1 antibody [MIH6].



For full product information, images and publications, please visit our [website](https://www.genetex.com).