

PD-L2 antibody [MIH14]

Cat. No. GTX42170

Host	Mouse
Clonality	Monoclonal
Isotype	IgG1
Application	IHC-Fr, FACS
Reactivity	Human

Package
200 µg

APPLICATION

Application Note

*Optimal dilutions/concentrations should be determined by the researcher.

Suggested dilution	Recommended dilution
IHC-Fr	Assay dependent
FACS	1/10-1/50

Note : Use 10µl of the suggested working dilution to label 10⁶ cells in 100µl.

Not tested in other applications.

Calculated MW 31 kDa. ([Note](#))

PROPERTIES

Form	Liquid
Buffer	PBS, 0.09% Sodium Azide
Storage	Store as concentrated solution. Centrifuge briefly prior to opening vial. For short-term storage (1-2 weeks), store at 4°C. For long-term storage, aliquot and store at -20°C or below. Avoid multiple freeze-thaw cycles.
Concentration	1.0 mg/ml (Please refer to the vial label for the specific concentration.)
Immunogen	Human PD-L2 transfected L cells.
Purification	Protein G purified From tissue culture supernatant
Conjugation	Unconjugated

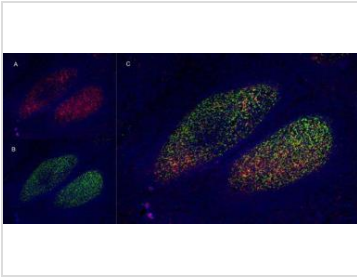
Note

For laboratory research use only. Not for any clinical, therapeutic, or diagnostic use in humans or animals. Not for animal or human consumption.

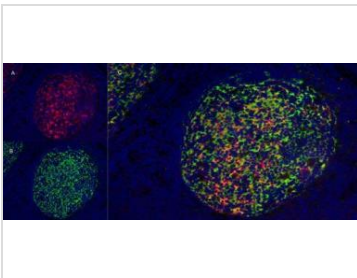
Purchasers shall not, and agree not to enable third parties to, analyze, copy, reverse engineer or otherwise attempt to determine the structure or sequence of the product.



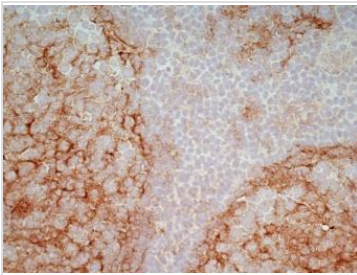
For full product information, images and publications, please visit our [website](#).

DATA IMAGES

GTx42170 IHC-Fr Image

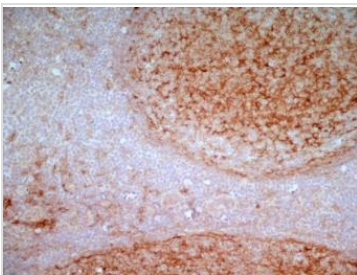
IHC-Fr staining of human tonsil with Mouse anti Human PD-L2 antibody, clone MIH14 (GTx42170), red in A anti Mouse anti Human CD21 antibody, clone LB21 (GTx74728), green in B. C is the merged image with nuclei counterstained blue using DAPI. Low power


GTx42170 IHC-Fr Image

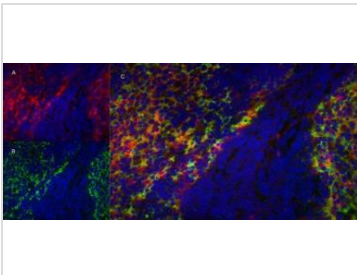
IHC-Fr staining of human tonsil with Mouse anti Human PD-L2 antibody, clone MIH14 (GTx42170), red in A anti Mouse anti Human CD21 antibody, clone LB21 (GTx74728), green in B. C is the merged image with nuclei counterstained blue using DAPI. Medium power


GTx42170 IHC-Fr Image

IHC-Fr analysis of human tonsil tissue using GTx42170 PD-L2 antibody [MIH14].


GTx42170 IHC-Fr Image

IHC-Fr analysis of human tonsil tissue using GTx42170 PD-L2 antibody [MIH14].


GTx42170 IHC-Fr Image

IHC-Fr staining of human tonsil with Mouse anti Human PD-L2 antibody, clone MIH14 (GTx42170), red in A anti Mouse anti Human CD21 antibody, clone LB21 (GTx74728), green in B. C is the merged image with nuclei counterstained blue using DAPI. High power



For full product information, images and publications, please visit our [website](https://www.genetex.com).