

DR5 antibody

Cat. No. GTX42181

| | |
|---------------------|-------------------|
| Host | Goat |
| Clonality | Polyclonal |
| Isotype | IgG |
| Applications | IHC-P, FCM, ELISA |
| Reactivity | Human, Mouse |

Package
100 µg

Applications

Application Note

*Optimal dilutions/concentrations should be determined by the researcher.

| Suggested dilution | Recommended dilution |
|--------------------|----------------------|
| IHC-P | 1/50 |
| FCM | Assay dependent |
| ELISA | 1/75,000 |

Note : This product is suitable for use in indirect ELISA applications

Not tested in other applications.

Properties

| | |
|----------------------|--|
| Form | Liquid |
| Buffer | PBS, 0.1% BSA |
| Preservative | 0.1% Sodium azide |
| Storage | Store as concentrated solution. Centrifuge briefly prior to opening vial. For short-term storage (1-2 weeks), store at 4°C. For long-term storage, aliquot and store at -20°C or below. Avoid multiple freeze-thaw cycles. |
| Concentration | 1.0 mg/ml (Please refer to the vial label for the specific concentration.) |
| Immunogen | Synthetic peptide APQQRSSPSEGLCPPGHHISEDGRDC corresponding to amino acids 68-94 of the extracellular domain of human DR5. |
| Purification | Purified by affinity chromatography |
| Conjugation | Unconjugated |

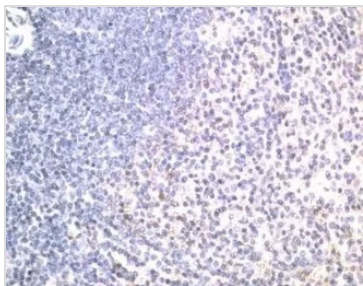
Note

For laboratory research use only. Not for any clinical, therapeutic, or diagnostic use in humans or animals. Not for animal or human consumption.

Purchasers shall not, and agree not to enable third parties to, analyze, copy, reverse engineer or otherwise attempt to determine the structure or sequence of the product.



For full product information, images and publications, please visit our [website](#).

DATA IMAGES

GTX42181 IHC-P Image

IHC-P analysis of human spleen tissue using GTX42181 DR5 antibody.



For full product information, images and publications, please visit our [website](#).