

# IL2 Receptor alpha antibody [OX-39]

**Cat. No. GTX42210**

<b>Host</b>	Mouse
<b>Clonality</b>	Monoclonal
<b>Isotype</b>	IgG1
<b>Application</b>	IHC-P, IHC-Fr, FACS, IP, ELISA
<b>Reactivity</b>	Rat

**Package**  
250 µg

## APPLICATION

### Application Note

\*Optimal dilutions/concentrations should be determined by the researcher.

Suggested dilution	Recommended dilution
IHC-P	Assay dependent
IHC-Fr	Assay dependent
FACS	Assay dependent
IP	Assay dependent
ELISA	Assay dependent

Not tested in other applications.

**Calculated MW** 31 kDa. ( [Note](#) )

## PROPERTIES

<b>Form</b>	Liquid
<b>Buffer</b>	PBS
<b>Preservative</b>	0.09% Sodium azide
<b>Storage</b>	Store as concentrated solution. Centrifuge briefly prior to opening vial. For short-term storage (1-2 weeks), store at 4°C. For long-term storage, aliquot and store at -20°C or below. Avoid multiple freeze-thaw cycles.
<b>Concentration</b>	1.0 mg/ml (Please refer to the vial label for the specific concentration.)
<b>Immunogen</b>	Stimulated Rat T cells
<b>Purification</b>	Protein A purified From tissue culture supernatant
<b>Conjugation</b>	Unconjugated

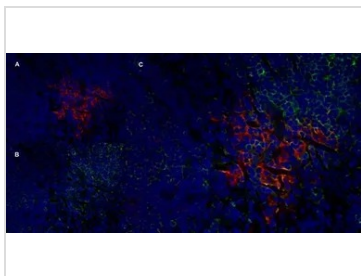


For full product information, images and publications, please visit our [website](#).

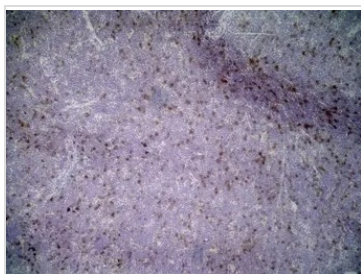
For laboratory research use only. Not for any clinical, therapeutic, or diagnostic use in humans or animals. Not for animal or human consumption.

**Note**

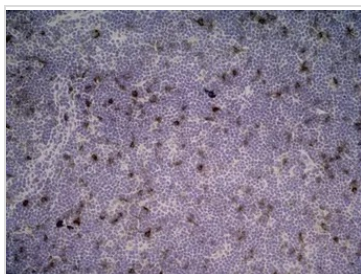
Purchasers shall not, and agree not to enable third parties to, analyze, copy, reverse engineer or otherwise attempt to determine the structure or sequence of the product.

**DATA IMAGES**

**GTX42210 IHC-Fr Image**

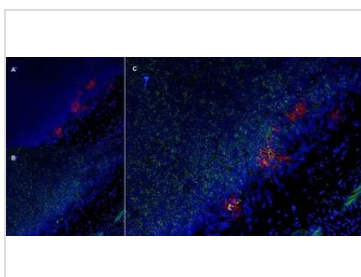
IHC-Fr analysis of rat lymph node with Mouse anti Rat CD25 antibody (GTX42210), red in A and Mouse anti Rat CD8 (GTX41830), green in B. C is the merged image with nuclei counterstained blue using DAPI.


**GTX42210 IHC-Fr Image**

IHC-Fr analysis of rat lymph node with Mouse anti Rat CD25 (GTX42210) followed by horseradish peroxidase conjugated Goat anti Mouse IgG1 as a detection reagent.


**GTX42210 IHC-Fr Image**

IHC-Fr analysis of rat lymph node with Mouse anti Rat CD25 (GTX42210) followed by horseradish peroxidase conjugated Goat anti Mouse IgG1 as a detection reagent.


**GTX42210 IHC-Fr Image**

IHC-Fr analysis of rat lymph node with Mouse anti Rat CD25 antibody (GTX42210), red in A and Mouse anti Rat CD8 (GTX41830), green in B. C is the merged image with nuclei counterstained blue using DAPI.



For full product information, images and publications, please visit our [website](https://www.genetex.com).