

LAG3 antibody [C9B7W]

Cat. No. GTX42243

Host	Rat
Clonality	Monoclonal
Isotype	IgG1
Application	FACS
Reactivity	Mouse

Reference (2)
Package
100 µg

APPLICATION

Application Note

*Optimal dilutions/concentrations should be determined by the researcher.

Suggested dilution	Recommended dilution
FACS	1/50-1/200

Note : Use 10µl of the suggested working dilution to label 10⁶ cells in 100µl.

Not tested in other applications.

Calculated MW	57 kDa. (Note)
Product Note	This antibody recognizes an epitope within the D2 domain of LAG3.

PROPERTIES

Form	Liquid
Buffer	PBS
Preservative	0.09% Sodium azide
Storage	Store as concentrated solution. Centrifuge briefly prior to opening vial. For short-term storage (1-2 weeks), store at 4°C. For long-term storage, aliquot and store at -20°C or below. Avoid multiple freeze-thaw cycles.
Concentration	1.0 mg/ml (Please refer to the vial label for the specific concentration.)
Immunogen	Murine LAG3 Ig fusion protein.
Purification	Protein G purified From tissue culture supernatant
Conjugation	Unconjugated

Note

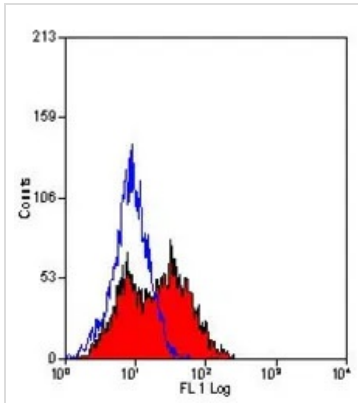
For laboratory research use only. Not for any clinical, therapeutic, or diagnostic use in humans or animals. Not for animal or human consumption.

Purchasers shall not, and agree not to enable third parties to, analyze, copy, reverse engineer or otherwise attempt to determine the structure or sequence of the product.



For full product information, images and publications, please visit our [website](#).

DATA IMAGES



GTX42243 FACS Image

FACS analysis of CD223 transfected cells using GTX42243 LAG3 antibody [C9B7W].



For full product information, images and publications, please visit our [website](#).