

LAG3 antibody [C9B7W]

Cat. No. GTX42245

Host	Rat
Clonality	Monoclonal
Isotype	IgG1
Applications	FCM
Reactivity	Mouse

References (2)

Package

250 µg

Applications

Application Note

*Optimal dilutions/concentrations should be determined by the researcher.

Suggested dilution	Recommended dilution
FCM	Assay dependent

Not tested in other applications.

Product Note This antibody recognizes an epitope within the D2 domain of LAG3.

Properties

Form	Liquid
Buffer	PBS
Preservative	0.09% Sodium azide
Storage	Store as concentrated solution. Centrifuge briefly prior to opening vial. For short-term storage (1-2 weeks), store at 4°C. For long-term storage, aliquot and store at -20°C or below. Avoid multiple freeze-thaw cycles.
Concentration	1.0 mg/ml (Please refer to the vial label for the specific concentration.)
Immunogen	Murine LAG3 Ig fusion protein.
Purification	Protein G purified From tissue culture supernatant
Conjugation	Unconjugated

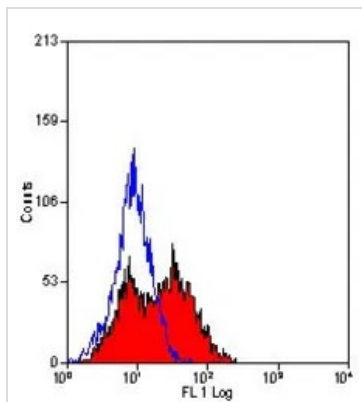
Note

For laboratory research use only. Not for any clinical, therapeutic, or diagnostic use in humans or animals. Not for animal or human consumption.

Purchasers shall not, and agree not to enable third parties to, analyze, copy, reverse engineer or otherwise attempt to determine the structure or sequence of the product.



For full product information, images and publications, please visit our [website](#).

DATA IMAGES

GTX42245 FCM Image

FACS analysis of CD223 transfected cells using GTX42245 LAG3 antibody [C9B7W].



For full product information, images and publications, please visit our [website](#).