

IGF1R alpha antibody [AMY10-105.8 (1H7)] (Low endotoxin, azide free)

Cat. No. GTX42246

Host	Mouse
Clonality	Monoclonal
Isotype	IgG1
Applications	WB, IHC-P, FCM, Neutralizing /Inhibition
Reactivity	Human

Package
100 µg

Applications

Application Note

*Optimal dilutions/concentrations should be determined by the researcher.

Suggested dilution	Recommended dilution
WB	Assay dependent
IHC-P	1/10-1/40
FCM	1/10
Neutralizing /Inhibition	Assay dependent

Note : This product requires protein digestion pre-treatment of paraffin sections e.g. trypsin or pronase.

Use 10µl of the suggested working dilution to label 10⁶ cells in 100µl.

Clone 1H7 is reported to partially block binding of IGF-I and IGF-II to CD221 (Li et al.1993).

Not tested in other applications.

Calculated MW 155 kDa. ([Note](#))

Product Note This antibody recognizes an epitope in the alpha subunits of IGF1R. Clone 1H7 is reported to partially block binding of IGF-I and IGF-II to IGF1 Receptor (Li et al.1993).

Properties

Form	Liquid
Buffer	PBS
Preservative	No preservatives
Storage	Store as concentrated solution. Centrifuge briefly prior to opening vial. For short-term storage (1-2 weeks), store at 4°C. For long-term storage, aliquot and store at -20°C or below. Avoid multiple freeze-thaw cycles.
Concentration	1.0 mg/ml (Please refer to the vial label for the specific concentration.)
Immunogen	Purified human placental IGF-I receptor.
Purification	Protein G purified From tissue culture supernatant



For full product information, images and publications, please visit our [website](#).

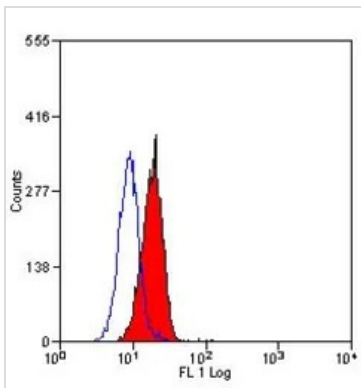
Endotoxin < 0.01 EU/μg (determined by the LAL assay)

Conjugation Unconjugated

Note For laboratory research use only. Not for any clinical, therapeutic, or diagnostic use in humans or animals. Not for animal or human consumption.

Purchasers shall not, and agree not to enable third parties to, analyze, copy, reverse engineer or otherwise attempt to determine the structure or sequence of the product.

DATA IMAGES



GTX42246 FCM Image

FACS analysis of human peripheral blood granulocytes using GTX42246 IGF1R alpha antibody [AMY10-105.8 (1H7)] (Low endotoxin, azide free).



For full product information, images and publications, please visit our [website](#).