

# Mannose Receptor antibody [MR5D3]

**Cat. No. GTX42264**

<b>Host</b>	Rat
<b>Clonality</b>	Monoclonal
<b>Isotype</b>	IgG2a
<b>Applications</b>	ICC/IF, IHC-P, IHC-Fr, FCM, IP
<b>Reactivity</b>	Mouse, Rat

References ( 11 )

Package

100 µg

## Applications

### Application Note

\*Optimal dilutions/concentrations should be determined by the researcher.

Suggested dilution	Recommended dilution
ICC/IF	Assay dependent
IHC-P	Assay dependent
IHC-Fr	Assay dependent
FCM	1/10-1/20
IP	Assay dependent

**Note : CD206 is expressed weakly at the cell surface. Staining may be increased following membrane permeabilisation. Use 10µl of the suggested working dilution to label 10<sup>6</sup> cells in 100µl.**

Not tested in other applications.

### Product Note

Clone MR5D3 has been reported to be non-inhibitory for the binding of the mannose receptor to carbohydrate ligands (Zamze et al. 2002).

## Properties

<b>Form</b>	Liquid
<b>Buffer</b>	PBS
<b>Preservative</b>	0.09% Sodium azide
<b>Storage</b>	Store as concentrated solution. Centrifuge briefly prior to opening vial. For short-term storage (1-2 weeks), store at 4°C. For long-term storage, aliquot and store at -20°C or below. Avoid multiple freeze-thaw cycles.
<b>Concentration</b>	1.0 mg/ml (Please refer to the vial label for the specific concentration.)
<b>Immunogen</b>	Chimaeric CRD4-7-Fc protein.
<b>Purification</b>	Protein G purified From tissue culture supernatant



For full product information, images and publications, please visit our [website](#).

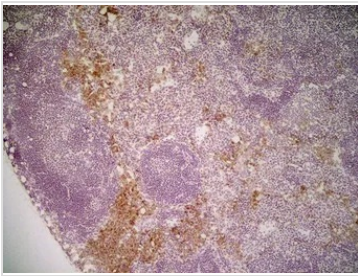
**Conjugation**

Unconjugated

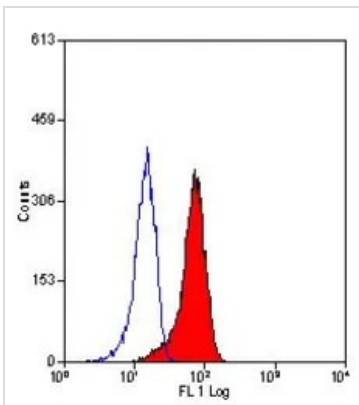
**Note**

For laboratory research use only. Not for any clinical, therapeutic, or diagnostic use in humans or animals. Not for animal or human consumption.

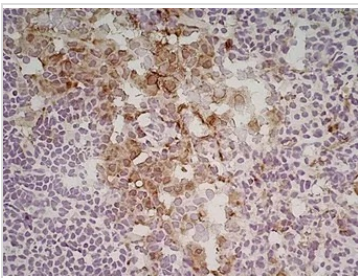
Purchasers shall not, and agree not to enable third parties to, analyze, copy, reverse engineer or otherwise attempt to determine the structure or sequence of the product.

**DATA IMAGES**

**GTX42264 IHC-Fr Image**

IHC-Fr analysis of mouse lymph node tissue using GTX42264 Mannose Receptor antibody [MR5D3].


**GTX42264 FCM Image**

FACS analysis of J774 cells using GTX42264 Mannose Receptor antibody [MR5D3].


**GTX42264 IHC-Fr Image**

IHC-Fr analysis of mouse lymph node tissue using GTX42264 Mannose Receptor antibody [MR5D3].



For full product information, images and publications, please visit our [website](#).