

Mannose Receptor antibody [MR5D3]

Cat. No. GTX42265

Host	Rat
Clonality	Monoclonal
Isotype	IgG2a
Applications	ICC/IF, IHC-P, IHC-Fr, FCM, IP
Reactivity	Mouse, Rat

References (10)

Package

250 µg

Applications

Application Note

*Optimal dilutions/concentrations should be determined by the researcher.

Suggested dilution	Recommended dilution
ICC/IF	Assay dependent
IHC-P	Assay dependent
IHC-Fr	Assay dependent
FCM	1/10-1/20
IP	Assay dependent

Note : CD206 is expressed weakly at the cell surface. Staining may be increased following membrane permeabilisation. Use 10µl of the suggested working dilution to label 10⁶ cells in 100µl.

Not tested in other applications.

Product Note

Clone MR5D3 has been reported to be non-inhibitory for the binding of the mannose receptor to carbohydrate ligands (Zamze et al. 2002).

Properties

Form	Liquid
Buffer	PBS
Preservative	0.09% Sodium azide
Storage	Store as concentrated solution. Centrifuge briefly prior to opening vial. For short-term storage (1-2 weeks), store at 4°C. For long-term storage, aliquot and store at -20°C or below. Avoid multiple freeze-thaw cycles.
Concentration	1.0 mg/ml (Please refer to the vial label for the specific concentration.)
Immunogen	Chimaeric CRD4-7-Fc protein.
Purification	Protein G purified From tissue culture supernatant



For full product information, images and publications, please visit our [website](#).

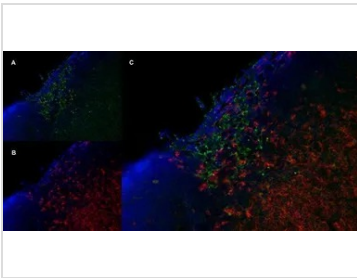
Conjugation

Unconjugated

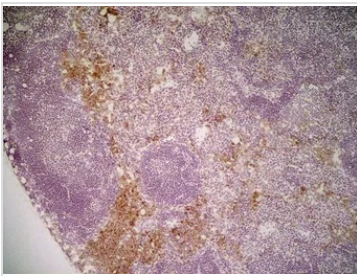
Note

For laboratory research use only. Not for any clinical, therapeutic, or diagnostic use in humans or animals. Not for animal or human consumption.

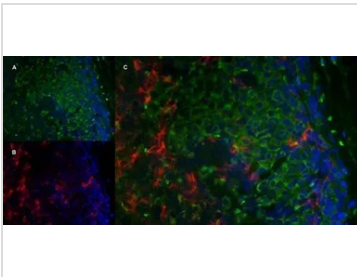
Purchasers shall not, and agree not to enable third parties to, analyze, copy, reverse engineer or otherwise attempt to determine the structure or sequence of the product.

DATA IMAGES

GTX42265 IHC-Fr Image

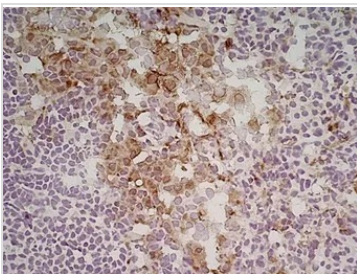
IHC-Fr analysis of mouse lymph node tissue using GTX42265 Mannose Receptor antibody, green in A and Rat anti Mouse CD8 antibody, clone YTS105.18, red in B. C is the merged image with nuclei counterstained in blue using DAPI.


GTX42265 IHC-Fr Image

IHC-Fr analysis of mouse lymph node tissue using GTX42265 Mannose Receptor antibody [MR5D3].


GTX42265 IHC-Fr Image

IHC-Fr analysis of mouse lymph node tissue using GTX42265 Mannose Receptor antibody, green in A and Rat anti Mouse CD8 antibody, clone YTS105.18, red in B. C is the merged image with nuclei counterstained in blue using DAPI.


GTX42265 IHC-Fr Image

IHC-Fr analysis of mouse lymph node tissue using GTX42265 Mannose Receptor antibody [MR5D3].



For full product information, images and publications, please visit our [website](https://www.genetex.com).