

## CD205 antibody [MG38] (Low endotoxin, azide free)

**Cat. No. GTX42273**

<b>Host</b>	Mouse
<b>Clonality</b>	Monoclonal
<b>Isotype</b>	IgG2b
<b>Applications</b>	IHC-Fr, FCM, IP
<b>Reactivity</b>	Human

Package  
100 µg

## Applications

**Application Note**

\*Optimal dilutions/concentrations should be determined by the researcher.

Suggested dilution	Recommended dilution
IHC-Fr	Assay dependent
FCM	Assay dependent
IP	Assay dependent

Not tested in other applications.

**Product Note**

This antibody stains mature monocyte - derived dendritic cells and weakly stains some peripheral blood mononuclear cells. Clone MG38 also stains cortical epithelium in the thymus.

## Properties

<b>Form</b>	Liquid
<b>Buffer</b>	PBS
<b>Preservative</b>	No preservatives
<b>Storage</b>	Store as concentrated solution. Centrifuge briefly prior to opening vial. For short-term storage (1-2 weeks), store at 4°C. For long-term storage, aliquot and store at -20°C or below. Avoid multiple freeze-thaw cycles.
<b>Concentration</b>	1.0 mg/ml (Please refer to the vial label for the specific concentration.)
<b>Immunogen</b>	CD205 CR-Fn II fusion protein.
<b>Purification</b>	Protein G purified From tissue culture supernatant
<b>Endotoxin</b>	< 0.01 EU/µg (determined by the LAL assay)
<b>Conjugation</b>	Unconjugated



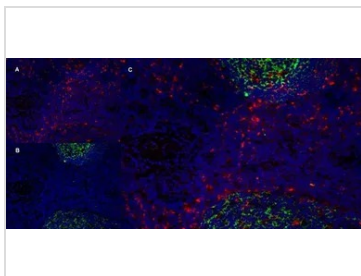
For full product information, images and publications, please visit our [website](#).

For laboratory research use only. Not for any clinical, therapeutic, or diagnostic use in humans or animals. Not for animal or human consumption.

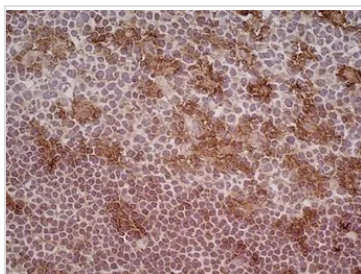
**Note**

Purchasers shall not, and agree not to enable third parties to, analyze, copy, reverse engineer or otherwise attempt to determine the structure or sequence of the product.

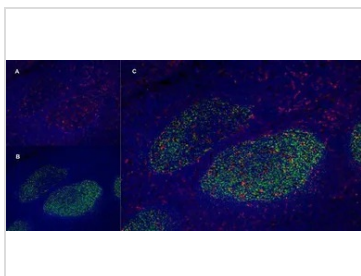
## DATA IMAGES

**GTX42273 IHC-Fr Image**

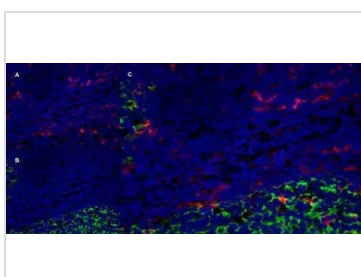
IHC-Fr staining for a human tonsil with Mouse anti Human CD205 antibody, clone MG38 (GTX42273), red in A and Mouse anti Human CD21, clone LB21 (GTX74728), green in B. C is the merged image with nuclei counterstained blue using DAPI. Medium power

**GTX42273 IHC-Fr Image**

IHC-Fr analysis of human tonsil tissue using GTX42273 CD205 antibody [MG38] (Low endotoxin, azide free).

**GTX42273 IHC-Fr Image**

IHC-Fr staining for a human tonsil with Mouse anti Human CD205 antibody, clone MG38 (GTX42273), red in A and Mouse anti Human CD21, clone LB21 (GTX74728), green in B. C is the merged image with nuclei counterstained blue using DAPI. Low power

**GTX42273 IHC-Fr Image**

IHC-Fr staining for a human tonsil with Mouse anti Human CD205 antibody, clone MG38 (GTX42273), red in A and Mouse anti Human CD21, clone LB21 (GTX74728), green in B. C is the merged image with nuclei counterstained blue using DAPI. High power



For full product information, images and publications, please visit our [website](#).