

CD205 antibody [HD30] (Low endotoxin, azide free)

Cat. No. GTX42276

Host	Mouse
Clonality	Monoclonal
Isotype	IgG1
Application	WB, IHC-Fr, FACS
Reactivity	Human, Monkey

Package
100 µg

APPLICATION

Application Note

*Optimal dilutions/concentrations should be determined by the researcher.

Suggested dilution	Recommended dilution
WB	Assay dependent
IHC-Fr	Assay dependent
FACS	1/10-1/200

Note : Use 10µl of the suggested working dilution to label 10⁶ cells in 100µl.

Not tested in other applications.

Calculated MW 198 kDa. ([Note](#))

PROPERTIES

Form	Liquid
Buffer	PBS
Preservative	No preservative
Storage	Store as concentrated solution. Centrifuge briefly prior to opening vial. For short-term storage (1-2 weeks), store at 4°C. For long-term storage, aliquot and store at -20°C or below. Avoid multiple freeze-thaw cycles.
Concentration	1.0 mg/ml (Please refer to the vial label for the specific concentration.)
Immunogen	Purified extracellular domain of human CD205-IgG1 Fc fusion protein.
Purification	Protein G purified From tissue culture supernatant
Endotoxin	< 0.01 EU/µg (determined by the LAL assay)
Conjugation	Unconjugated

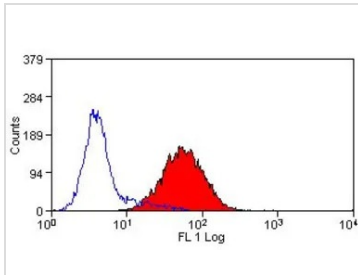


For full product information, images and publications, please visit our [website](#).

For laboratory research use only. Not for any clinical, therapeutic, or diagnostic use in humans or animals. Not for animal or human consumption.

Note

Purchasers shall not, and agree not to enable third parties to, analyze, copy, reverse engineer or otherwise attempt to determine the structure or sequence of the product.

DATA IMAGES

GTX42276 FACS Image

FACS analysis of KM-H2 cells using GTX42276 CD205 antibody [HD30] (Low endotoxin, azide free).



For full product information, images and publications, please visit our [website](#).