

# MSR1 antibody [2F8]

**Cat. No. GTX42280**

<b>Host</b>	Rat
<b>Clonality</b>	Monoclonal
<b>Isotype</b>	IgG2b
<b>Applications</b>	WB, ICC/IF, IHC-Fr, FCM, IP, ELISA
<b>Reactivity</b>	Mouse, Pig, Channel Catfish

**Package**  
100 µg

## Applications

### Application Note

\*Optimal dilutions/concentrations should be determined by the researcher.

Suggested dilution	Recommended dilution
WB	Assay dependent
ICC/IF	Assay dependent
IHC-Fr	Assay dependent
FCM	1/50-1/100
IP	Assay dependent
ELISA	Assay dependent

**Note : Use 10µl of the suggested working dilution to label 10<sup>6</sup> cells in 100µl.**

Not tested in other applications.

<b>Calculated MW</b>	50 kDa. ( <a href="#">Note</a> )
<b>Product Note</b>	Clone 2F8 is unsuitable for use with the C57BL/6 mouse strain (Daugherty et al. 2000).

## Properties

<b>Form</b>	Liquid
<b>Buffer</b>	PBS
<b>Preservative</b>	0.09% Sodium azide
<b>Storage</b>	Store as concentrated solution. Centrifuge briefly prior to opening vial. For short-term storage (1-2 weeks), store at 4°C. For long-term storage, aliquot and store at -20°C or below. Avoid multiple freeze-thaw cycles.
<b>Concentration</b>	1 mg/ml (Please refer to the vial label for the specific concentration.)
<b>Immunogen</b>	Raw 264 cell line.
<b>Purification</b>	Protein G purified From tissue culture supernatant



For full product information, images and publications, please visit our [website](#).

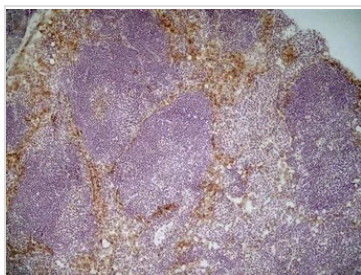
**Conjugation**

Unconjugated

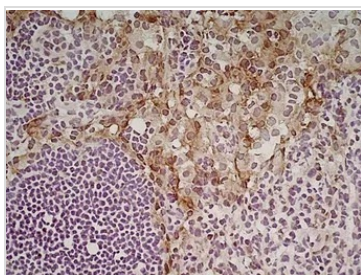
**Note**

For laboratory research use only. Not for any clinical, therapeutic, or diagnostic use in humans or animals. Not for animal or human consumption.

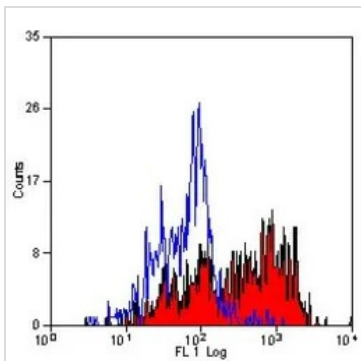
Purchasers shall not, and agree not to enable third parties to, analyze, copy, reverse engineer or otherwise attempt to determine the structure or sequence of the product.

**DATA IMAGES**

**GTx42280 IHC-Fr Image**

IHC-Fr analysis of mouse lymph node tissue using GTx42280 MSR1 antibody [2F8].


**GTx42280 IHC-Fr Image**

IHC-Fr analysis of mouse lymph node tissue using GTx42280 MSR1 antibody [2F8].


**GTx42280 FCM Image**

FACS analysis of mouse peritoneal macrophages using GTx42280 MSR1 antibody [2F8].



For full product information, images and publications, please visit our [website](https://www.genetex.com).