

## MSR1 antibody [2F8] (Low endotoxin, azide free)

**Cat. No. GTX42281**

<b>Host</b>	Rat
<b>Clonality</b>	Monoclonal
<b>Isotype</b>	IgG2b
<b>Applications</b>	WB, IHC-Fr, FCM, IP, ELISA, Functional Assay
<b>Reactivity</b>	Mouse, Pig, Channel Catfish

**Package**  
100 µg

## Applications

**Application Note**

\*Optimal dilutions/concentrations should be determined by the researcher.

Suggested dilution	Recommended dilution
WB	Assay dependent
IHC-Fr	Assay dependent
FCM	Assay dependent
IP	Assay dependent
ELISA	Assay dependent
Functional Assay	Assay dependent

Not tested in other applications.

**Calculated MW** 50 kDa. ( [Note](#) )

**Product Note** Clone 2F8 is unsuitable for use with the C57BL/6 mouse strain (Daugherty et al. 2000).

## Properties

<b>Form</b>	Liquid
<b>Buffer</b>	PBS
<b>Preservative</b>	No preservatives
<b>Storage</b>	Store as concentrated solution. Centrifuge briefly prior to opening vial. For short-term storage (1-2 weeks), store at 4°C. For long-term storage, aliquot and store at -20°C or below. Avoid multiple freeze-thaw cycles.
<b>Concentration</b>	1.0 mg/ml (Please refer to the vial label for the specific concentration.)
<b>Immunogen</b>	Raw 264 cell line.
<b>Purification</b>	Protein G purified From tissue culture supernatant



For full product information, images and publications, please visit our [website](#).

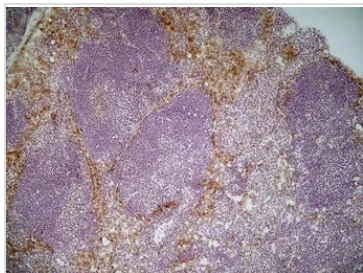
**Endotoxin** < 0.01 EU/μg (determined by the LAL assay)

**Conjugation** Unconjugated

For laboratory research use only. Not for any clinical, therapeutic, or diagnostic use in humans or animals. Not for animal or human consumption.

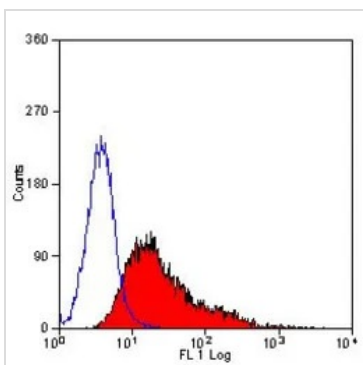
**Note** Purchasers shall not, and agree not to enable third parties to, analyze, copy, reverse engineer or otherwise attempt to determine the structure or sequence of the product.

DATA IMAGES



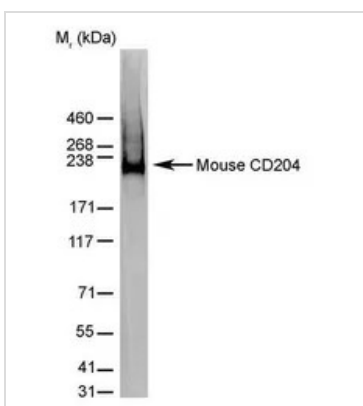
**GTX42281 IHC-Fr Image**

IHC-Fr analysis of mouse lymph node tissue using GTX42281 MSR1 antibody [2F8] (Low endotoxin, azide free).



**GTX42281 FCM Image**

FACS analysis of J774 cells using GTX42281 MSR1 antibody [2F8] (Low endotoxin, azide free).



**GTX42281 WB Image**

WB analysis of J774 cell lysate (non reduced) using GTX42281 MSR1 antibody [2F8] (Low endotoxin, azide free).



For full product information, images and publications, please visit our [website](#).