

CD2 antibody [Mac288]

Cat. No. GTX42302

Host	Rat
Clonality	Monoclonal
Isotype	IgG2a
Applications	IHC-Fr, FCM
Reactivity	Horse

Package
2 ml

Applications

Application Note

*Optimal dilutions/concentrations should be determined by the researcher.

Suggested dilution	Recommended dilution
IHC-Fr	Assay dependent
FCM	1/200

Note : Use 50µl of the suggested working dilution to label 7.5×10^5 cells in 100µl.

Not tested in other applications.

Product Note

This antibody recognizes equine CD2, a 347 amino acid, single pass type-1 transmembrane glycoprotein containing single Ig-like C2-type and Ig-like V-type domains.

Properties

Form	Liquid
Buffer	Tissue culture supernatant
Preservative	0.1% Sodium azide
Storage	Store as concentrated solution. Centrifuge briefly prior to opening vial. For short-term storage (1-2 weeks), store at 4°C. For long-term storage, aliquot and store at -20°C or below. Avoid multiple freeze-thaw cycles.
Immunogen	Equine peripheral blood lymphocytes.
Purification	Tissue Culture Supernatant
Conjugation	Unconjugated

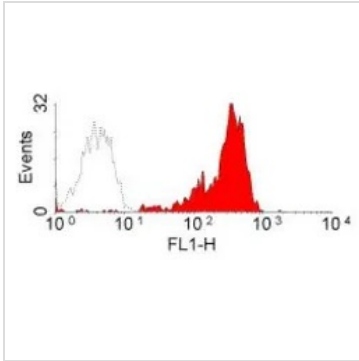
Note

For laboratory research use only. Not for any clinical, therapeutic, or diagnostic use in humans or animals. Not for animal or human consumption.

Purchasers shall not, and agree not to enable third parties to, analyze, copy, reverse engineer or otherwise attempt to determine the structure or sequence of the product.



For full product information, images and publications, please visit our [website](#).

DATA IMAGES

GTX42302 FCM Image

FACS analysis of horse peripheral blood lymphocytes using GTX42302 CD2 antibody [Mac288].



For full product information, images and publications, please visit our [website](#).